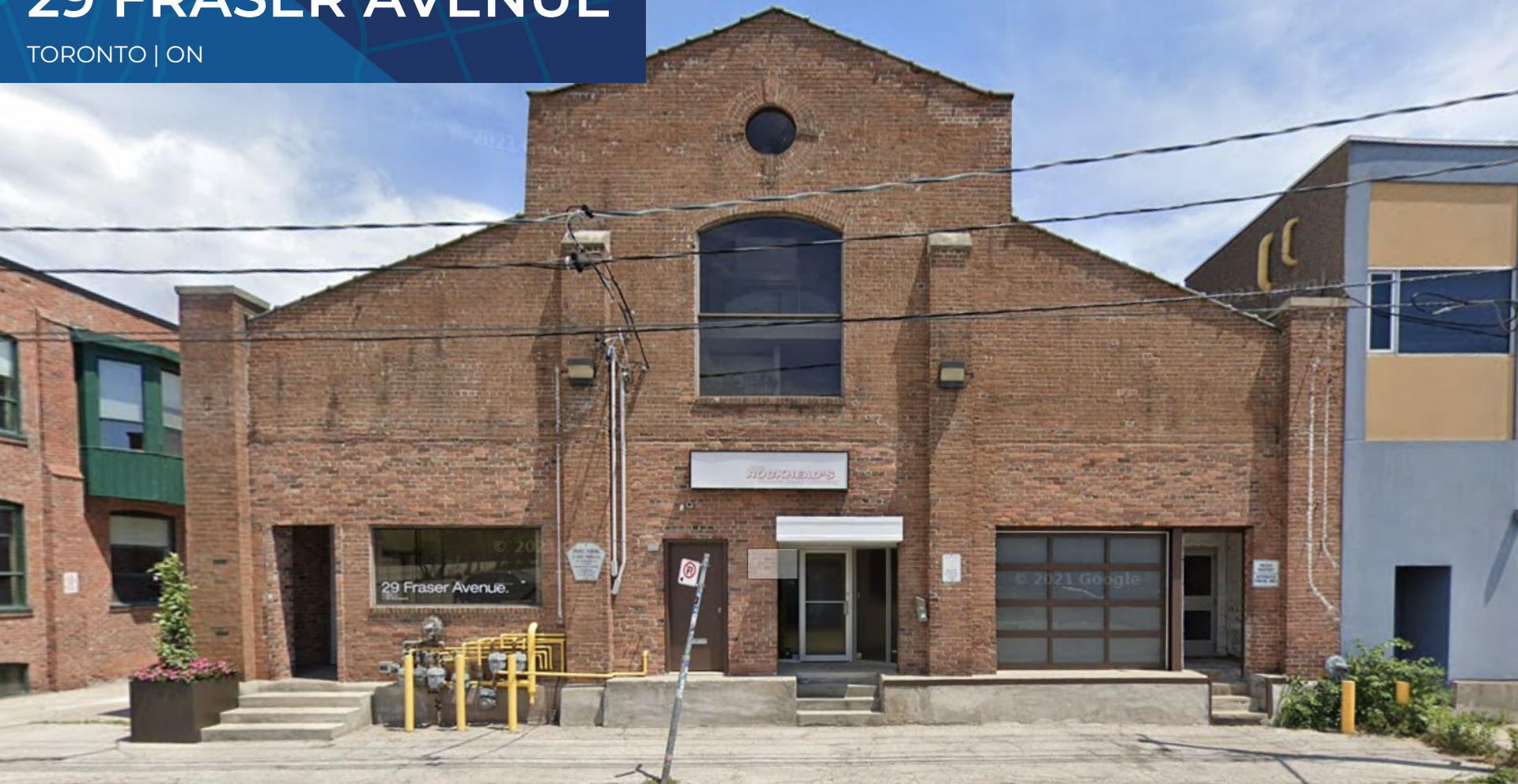


FOR LEASE  
**29 FRASER AVENUE**

TORONTO | ON



**METROPOLITAN  
COMMERCIAL**

## DETAILS

---

### LOCATION

Fraser Avenue, South of Liberty Street. [Click here for map](#)

### BUILDING DETAILS

Unit 2 - 1,183 SF

### NET RENTAL RATE

\$21.00 PSF

### ADDITIONAL RENT

\$9.50 PSF + Hydro + Gas + HST

### TERM

2 to 5 Years

### POSSESSION

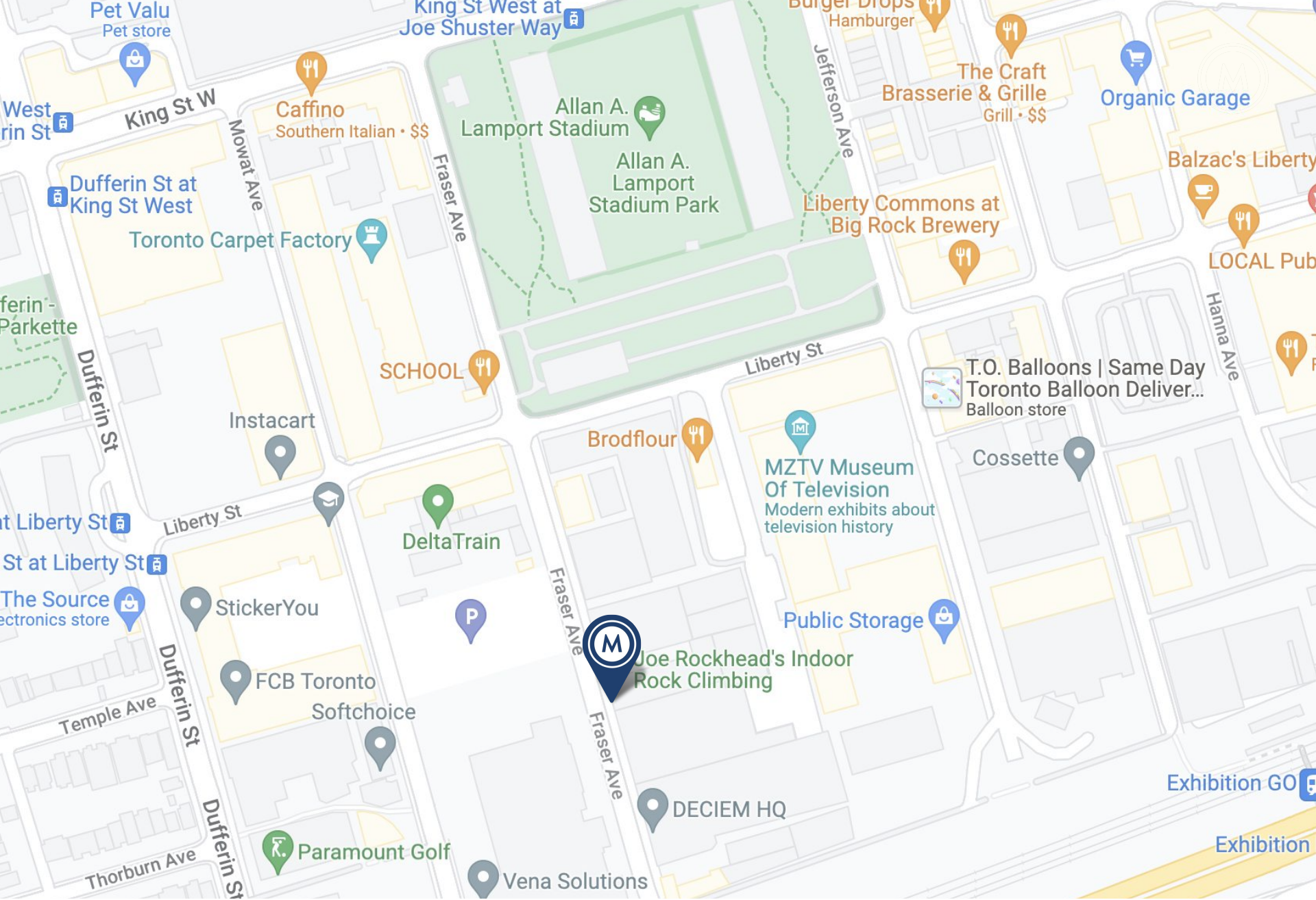
Immediate

## FEATURES

---

- Rare two-level Liberty Village office loft.
- 2nd floor walk up, bright, open concept, private washroom, hardwood floors, skylights.
- Close proximity to Exhibition Go Station.
- Beanfield Internet Service Available.









# LIBERTY VILLAGE

Liberty Village functions as one of the city's creative corridors with production facilities, agencies and tech firms operating out of lofts and studio spaces in converted former warehouses.

This area is filled with young professionals, who enjoy the wide range of activities offered both during daytime and nightlife.

**Notable landmarks** include Lamport Stadium, Balzac's Coffee, Mildred's Temple Kitchen, Liberty Commons, and MZTV Museum of Television.

**304**

8-minute walk

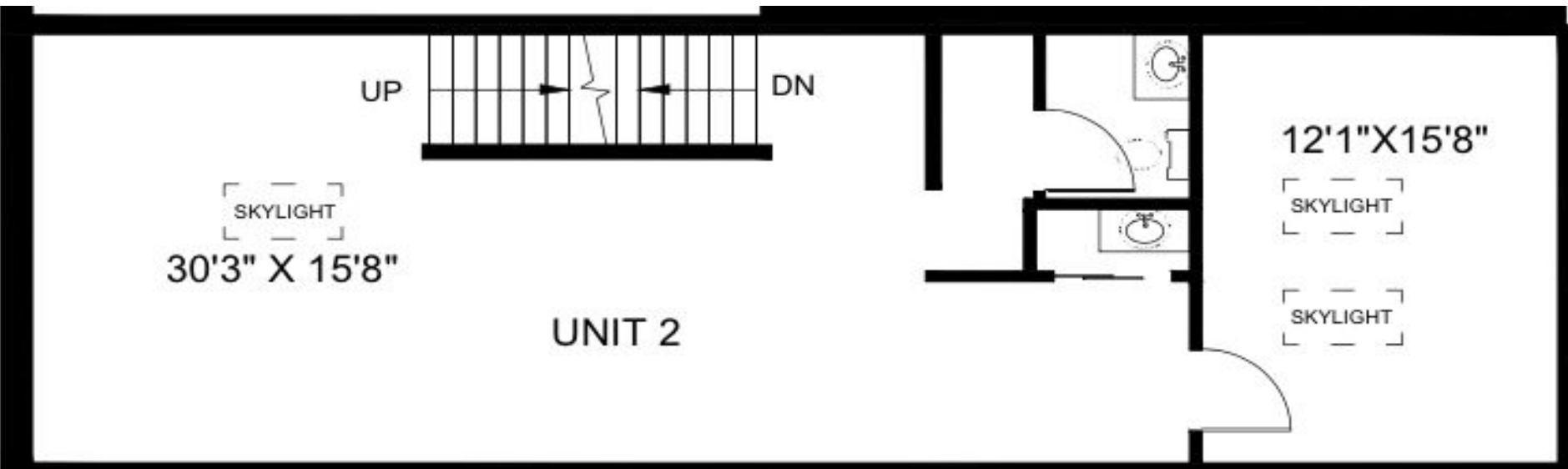
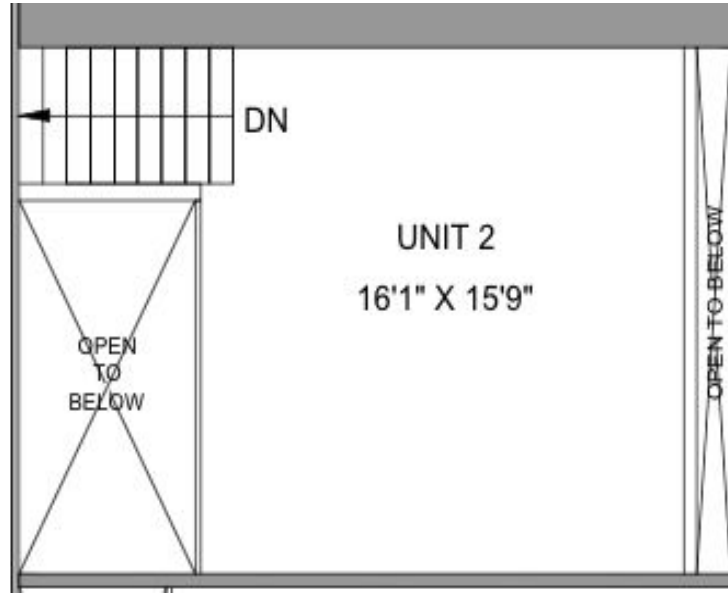
**504**

4-minute walk

**Exhibition GO**

5-minute walk

# FLOORPLAN







METROPOLITAN COMMERCIAL REALTY | 29 FRASER AVENUE #2



# METROPOLITAN COMMERCIAL

## **Ming Zee**

President, Broker of Record  
416.703.6621 x 222  
ming.zee@metcomrealty.com

## **Nick Nankisoor**

Sales Representative  
416.703.6621 x 241  
nick@metcomrealty.com

150 BEVERLEY STREET, UNIT 1

TORONTO, ON | M5T 1Y5

416.703.6621

[WWW.METCOMREALTY.COM](http://WWW.METCOMREALTY.COM)