



METROPOLITAN
COMMERCIAL



RETAIL FOR LEASE
521-523 VICTORIA PARK AVENUE

TORONTO | ON

DETAILS

LOCATION

On Victoria Park Avenue, South of Danforth Avenue. [Click here for map.](#)

BUILDING DETAILS

Unit 100 - 1,390 SF

NET RENTAL RATE

\$14.00 PSF

ADDITIONAL RENT

\$18.26 PSF T.M.I

TERM

1 to 5 Years

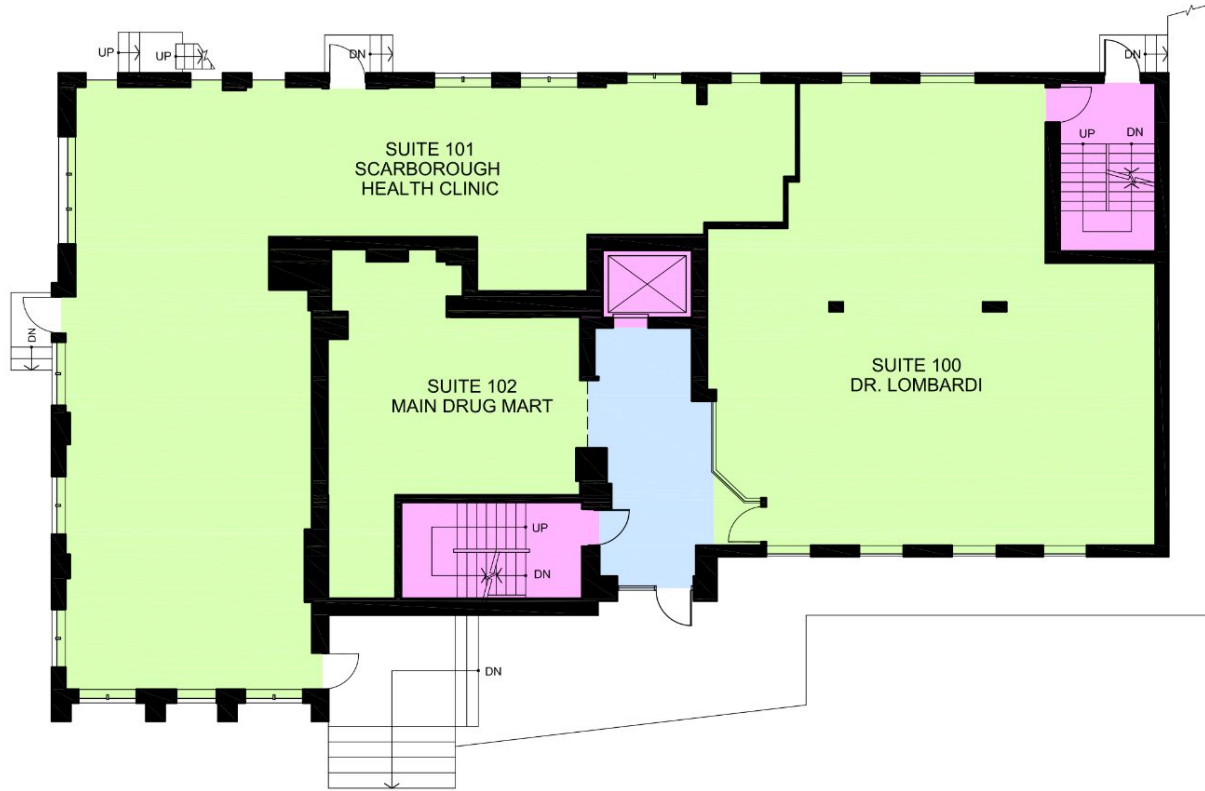
POSSESSION

Immediate

FEATURES

- Minutes to Danforth and Victoria Park Subway Station
- Well suited for medical uses and with a onsite Pharmacy
- Onsite parking

FLOORPLAN



- USABLE AREA
- VERTICAL PENETRATIONS
- FLOOR COMMON AREA
- BUILDING COMMON AREA

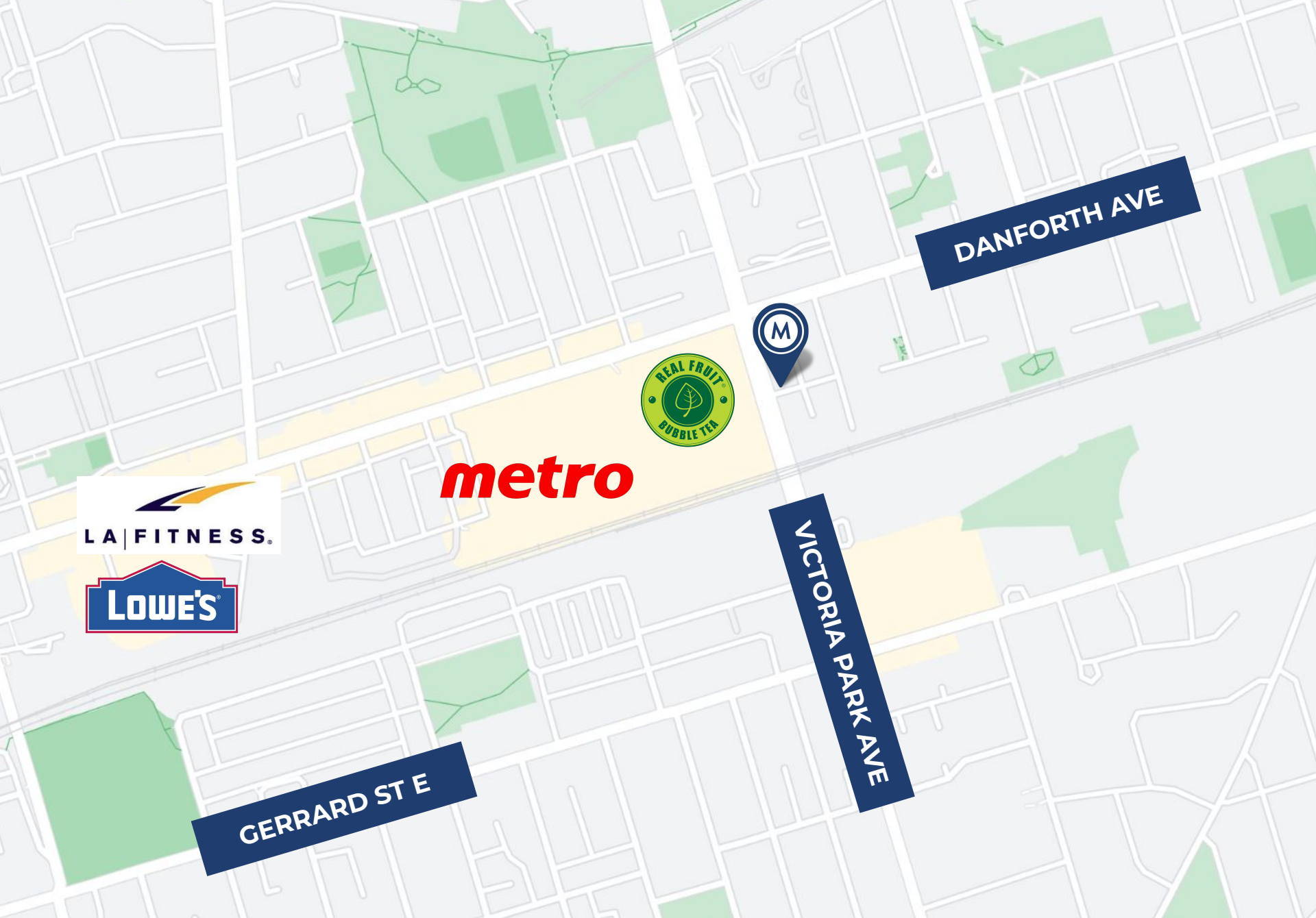
0 5 10 30 FT.

AREA SUMMARY

SUITE NO.	USABLE AREA	RENTABLE AREA
100	1,284	1,390
101	1,705	1,846
102	496	538
TOTAL	3,485	3,774

R/U RATIO = 1.08295

AREA INFORMATION ESTABLISHED ACCORDING TO BOMA / ANSI Z65.1 96



metro



DANFORTH AVE

VICTORIA PARK AVE

GERRARD ST E



**METROPOLITAN
COMMERCIAL**

TIM NOVAK

Senior Vice President,
Sales Representative

416.703.6621 x 246

tim.novak@metcomrealty.com

150 BEVERLEY STREET, UNIT 1

TORONTO, ON | M5T 1Y5

416.703.6621

WWW.METCOMREALTY.COM

The information contained herein has been gathered from sources deemed reliable. However, Metropolitan Commercial Realty Inc., Brokerage, its agents, or employees make no representations or warranties on the accuracy of said information. Prospective tenants and their agents are advised to independently verify any information provided herein. Metropolitan Commercial Realty Inc., Brokerage