



METROPOLITAN
COMMERCIAL



MEDICAL OFFICE FOR LEASE
521-523 VICTORIA PARK AVENUE

TORONTO | ON

DETAILS

LOCATION

On Victoria Park Avenue, South of Danforth Avenue. [Click here for map.](#)

BUILDING DETAILS

Unit 100 - 1,390 SF
Unit 001 - 1,388 SF

NET RENTAL RATE

\$14.00 PSF

ADDITIONAL RENT

\$18.26 PSF T.M.I

TERM

1 to 5 Years

POSSESSION

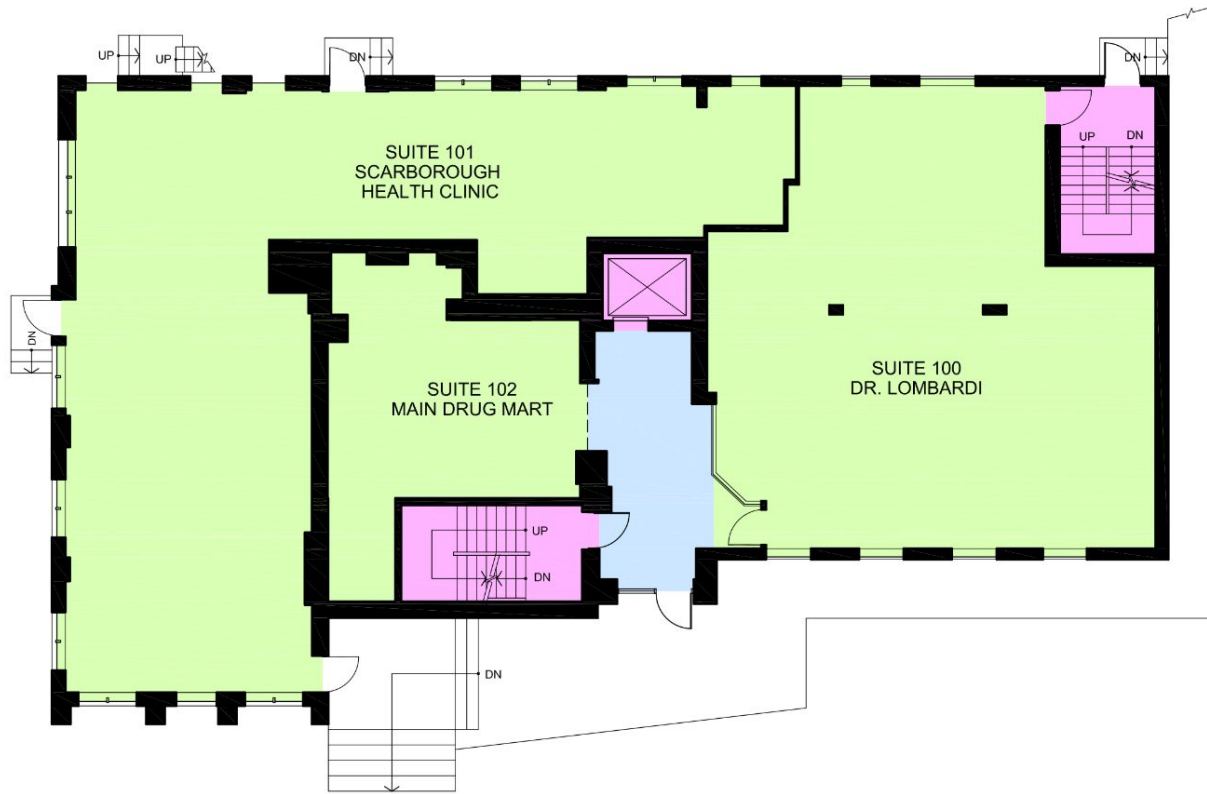
Immediate

FEATURES

- Minutes to Danforth and Victoria Park Subway Station
- Well suited for medical, office and lab uses and with a onsite Pharmacy
- Onsite parking
- Formally a doctor's office with reception, 5 treatment rooms with sinks, a private office and washroom
- Building is wheelchair accessible

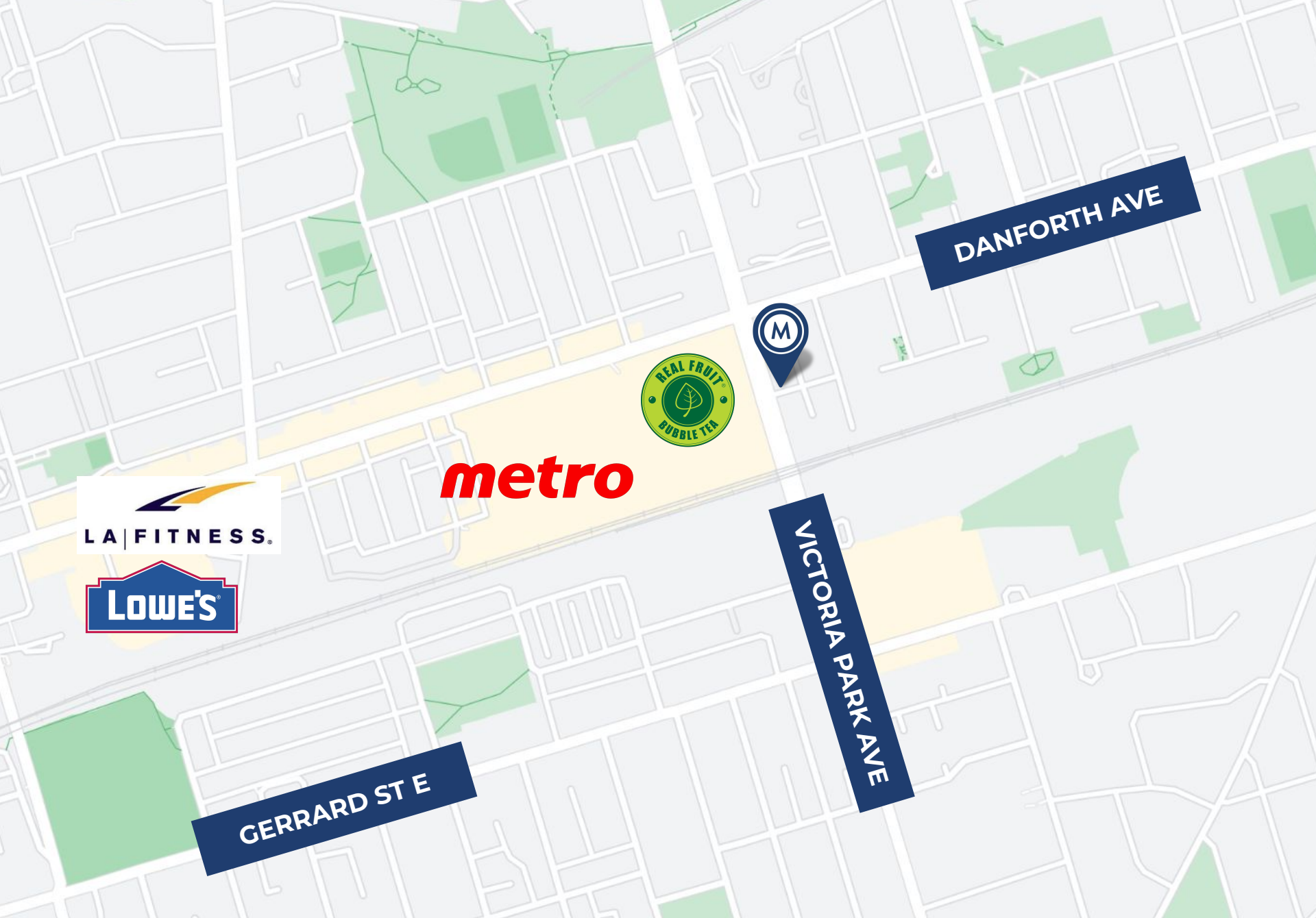


FLOORPLAN



FLOORPLAN





DANFORTH AVE



VICTORIA PARK AVE

GERRARD ST E



metro





**METROPOLITAN
COMMERCIAL**

TIM NOVAK

Senior Vice President,
Sales Representative

416.703.6621 x 246

tim.novak@metcomrealty.com

150 BEVERLEY STREET, UNIT 1

TORONTO, ON | M5T 1Y5

416.703.6621

WWW.METCOMREALTY.COM

The information contained herein has been gathered from sources deemed reliable. However, Metropolitan Commercial Realty Inc., Brokerage, its agents, or employees make no representations or warranties on the accuracy of said information. Prospective tenants and their agents are advised to independently verify any information provided herein. Metropolitan Commercial Realty Inc., Brokerage