



METROPOLITAN  
COMMERCIAL



RETAIL FOR LEASE  
**521-523 VICTORIA PARK AVENUE**

TORONTO | ON

## DETAILS

---

### LOCATION

On Victoria Park Avenue, South of Danforth Avenue. [Click here for map.](#)

### BUILDING DETAILS

Unit 100 - 1,390 SF  
Unit 001 - 1,388 SF

### NET RENTAL RATE

\$14.00 PSF

### ADDITIONAL RENT

\$18.26 PSF T.M.I

### TERM

1 to 5 Years

### POSSESSION

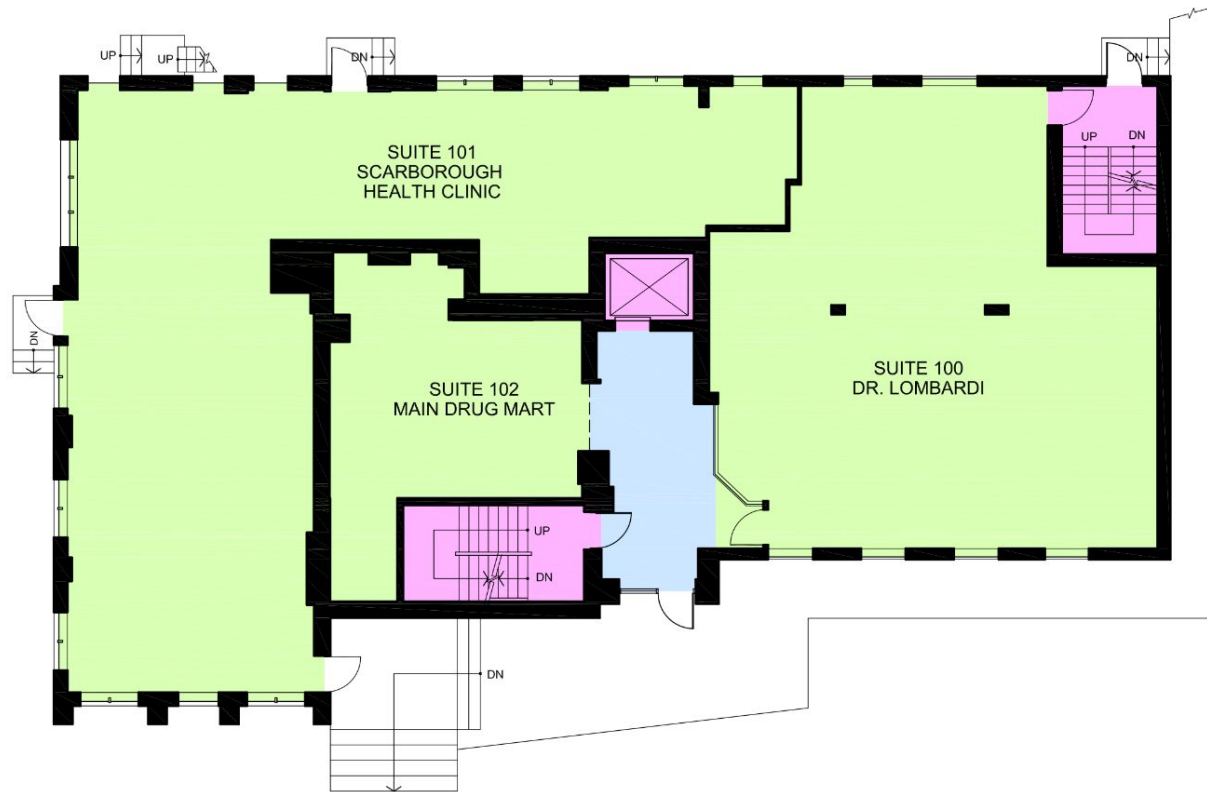
Immediate

## FEATURES

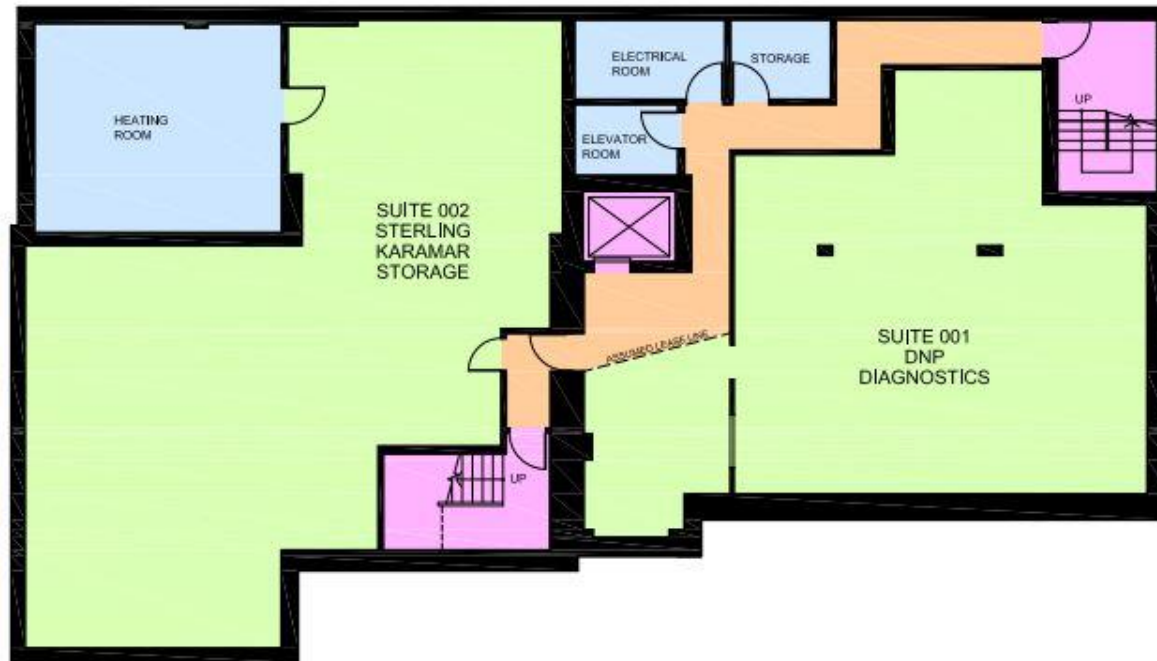
---

- Minutes to Danforth and Victoria Park Subway Station
- Well suited for medical, office and lab uses and with a onsite Pharmacy
- Onsite parking

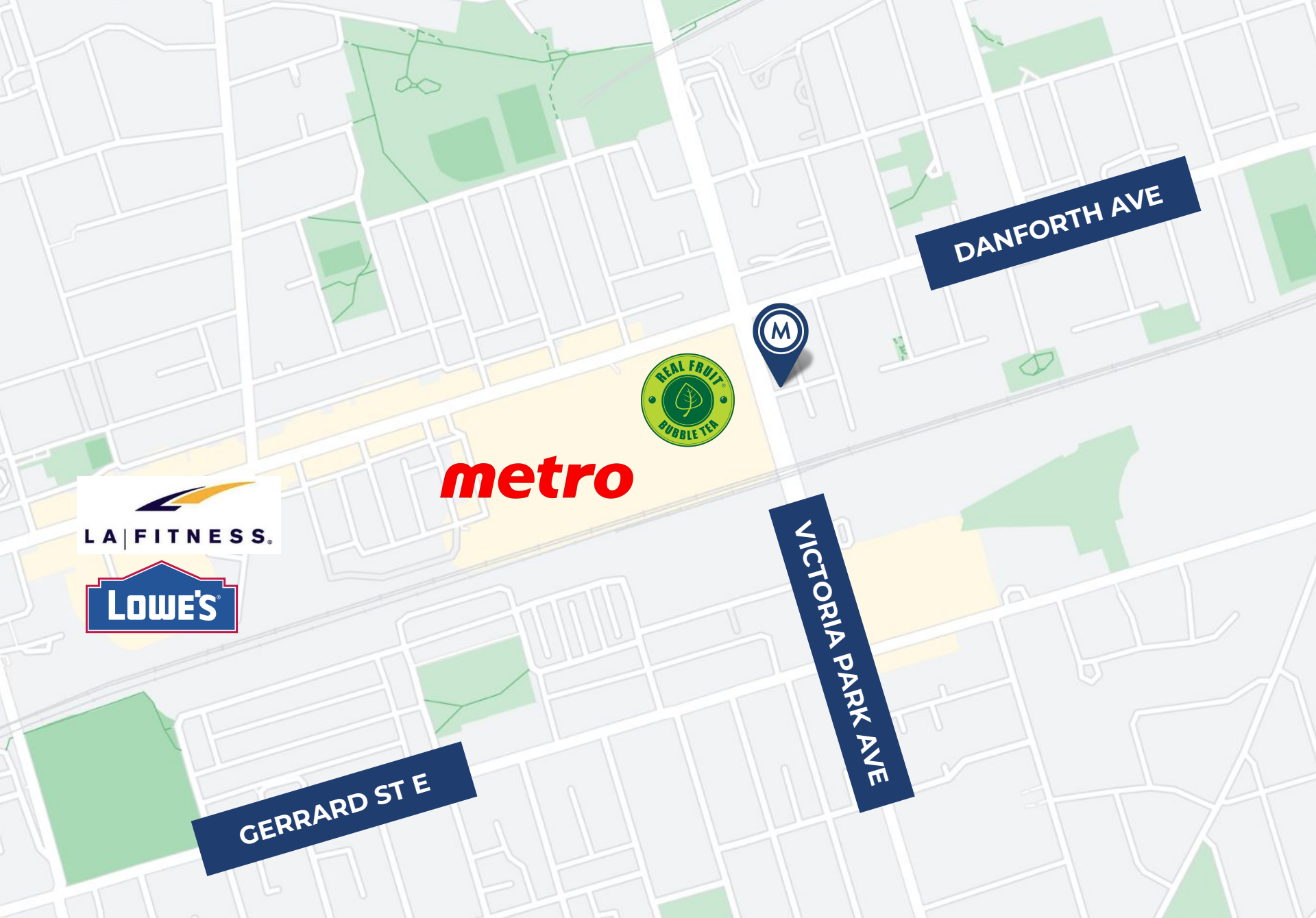
# FLOORPLAN



# FLOORPLAN







DANFORTH AVE



VICTORIA PARK AVE



***metro***



GERRARD ST E



**METROPOLITAN  
COMMERCIAL**

**TIM NOVAK**

Senior Vice President,  
Sales Representative

416.703.6621 x 246

[tim.novak@metcomrealty.com](mailto:tim.novak@metcomrealty.com)

150 BEVERLEY STREET, UNIT 1

TORONTO, ON | M5T 1Y5

416.703.6621

[WWW.METCOMREALTY.COM](http://WWW.METCOMREALTY.COM)

The information contained herein has been gathered from sources deemed reliable. However, Metropolitan Commercial Realty Inc., Brokerage, its agents, or employees make no representations or warranties on the accuracy of said information. Prospective tenants and their agents are advised to independently verify any information provided herein. Metropolitan Commercial Realty Inc., Brokerage