

FOR LEASE
571 DANFORTH AVENUE
TORONTO, ON



METROPOLITAN
COMMERCIAL



Offering Summary

Available for the first time in over 30 years, **571 Danforth Avenue** is ideally situated in the heart of Greektown.

- Excellent frontage and visibility
- Very high pedestrian & vehicular traffic
 - Fully renovated on possession
 - Brand new HVAC & storefront
 - Ideal for a variety of uses
- 4 minute walk to Pape Subway station

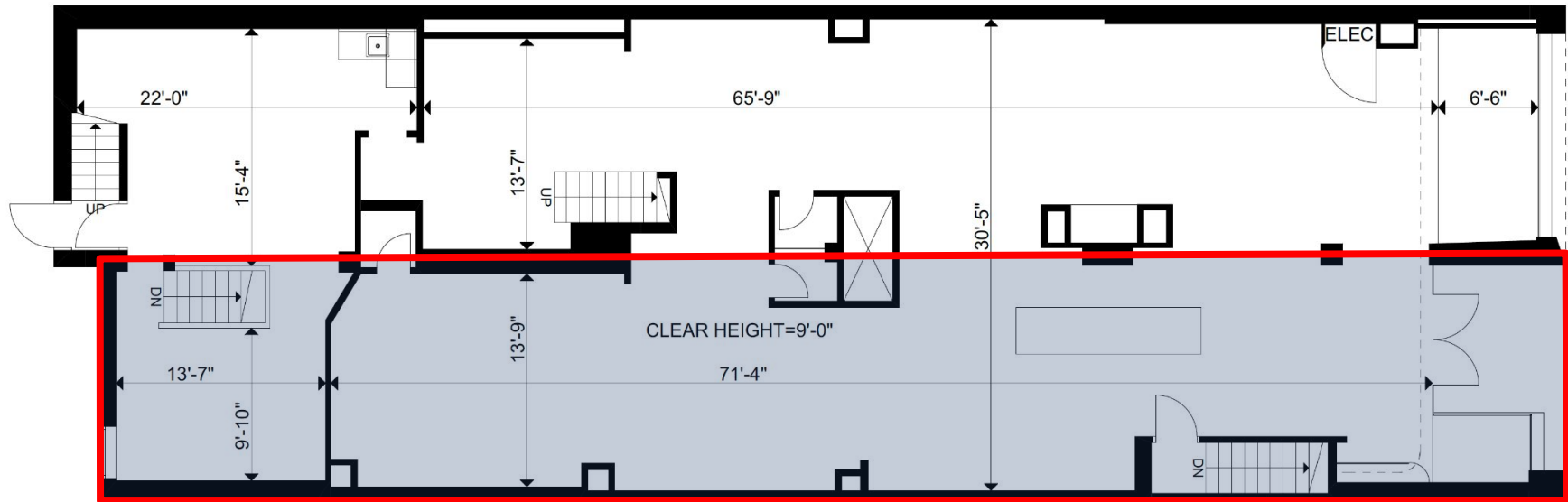
Property Details

| | |
|-----------|----------------|
| Unit Size | 1,486 SF |
| Net Rent | Please contact |
| TMI | \$22.18 |
| Available | Q4 2022 |

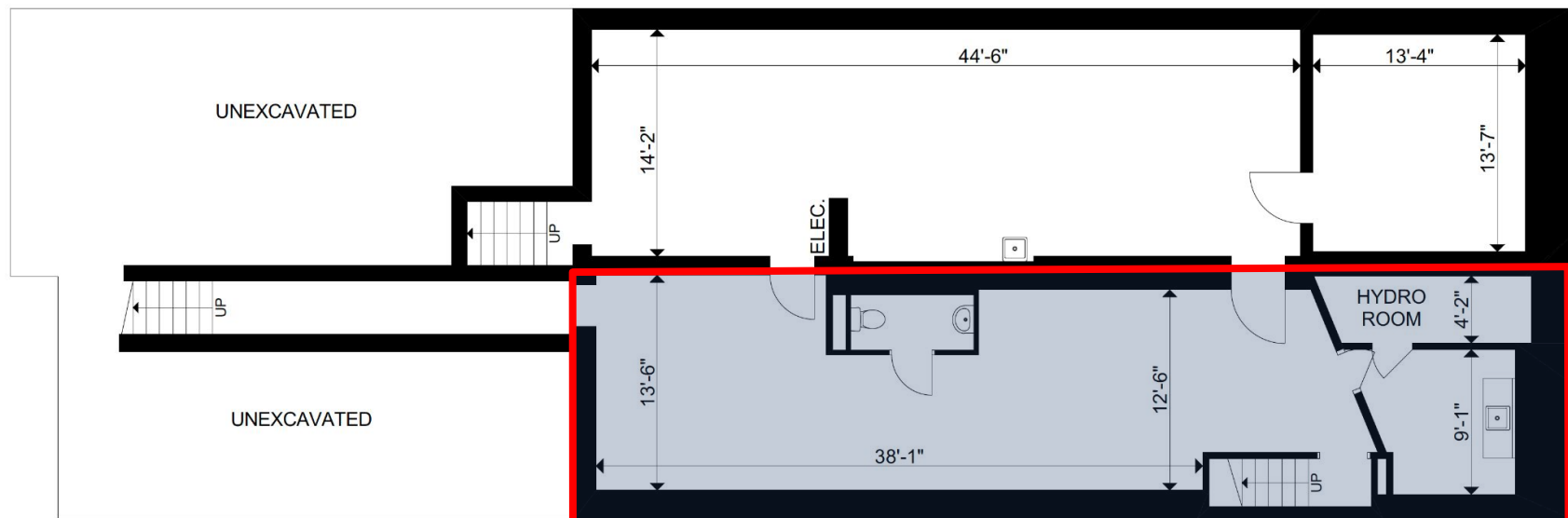


571 Danforth Ave - Floor Plan

Ground Floor



Lower Level





Neighbourhood Overview

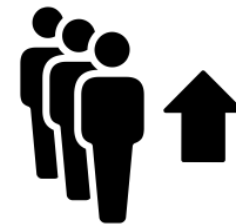
Nestled between the affluent residential neighbourhoods of Playter Estates and North Riverdale, **571 Danforth Avenue** is located in the heart of Greektown. While the area's history is deeply and proudly rooted in the Greek community, it is also now home to a rich variety of restaurants and retailers from a multitude of other communities. Danforth Avenue is a perfect representation of Toronto's vibrant, multicultural, and inclusive economy.

The area sees an influx of visitors in the summer months when residents from all over the GTA flock to enjoy the Danforth's one-of-a-kind retail and culinary experiences, highlighted by the Taste of the Danforth street festival attracting over 1.5 million visitors every year.



96,535

Total
Population



+3.4 %

5-Year
Population Growth

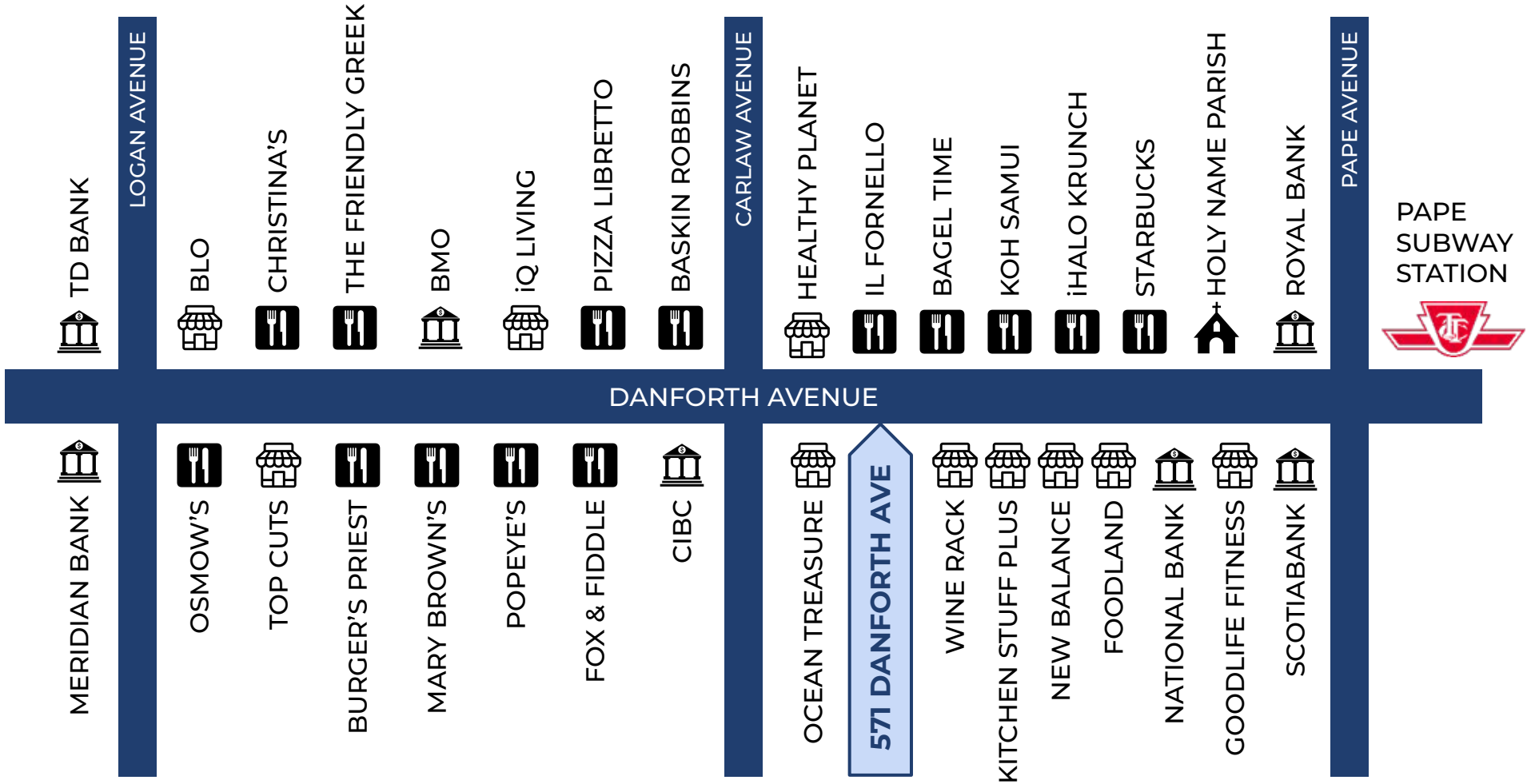


\$117,053

Average
Household Income

Based on 2022 statistics within a 2-kilometer radius

571 Danforth Ave - Neighbouring Retailers



571 Danforth Ave - Transit Connectivity

280 meters (4-minute walk) to Pape Subway Station





METROPOLITAN
COMMERCIAL

Amir Nourbakhsh*

647.262.4757

amir@metcomrealty.com

Jesse Roth*

647.289.0244

jesse@metcomrealty.com

Metropolitan Commercial Realty Inc.

150 Beverley Street, Unit 1

Toronto, ON M5T 1Y5

metcomrealty.com

Disclaimer: The information contained herein has been provided to Metropolitan Commercial Realty Inc. from sources deemed reliable and correct, however we do not warrant its accuracy or assume any responsibility or liability of any kind whatsoever with respect to the accuracy of the information contained herein. All persons are advised to independently verify the information. The information herein is subject to errors, omissions, change of price, rental or other conditions, prior sale or withdrawal at any time without notice.
Metropolitan Commercial Realty Inc., Brokerage. *Sales Representative