



METROPOLITAN  
COMMERCIAL



FLEX SPACE FOR LEASE  
**1024 DUPONT STREET**

TORONTO | ON

## DETAILS

---

### LOCATION

On Dupont Street, East of Dovercourt Road. [Click here for map](#)

### BUILDING DETAILS

Main Floor - 6,886 SF

### RENTAL RATE

\$20.00 PSF/YR Semi-Gross

### ADDITIONAL RENT

Hydro

### TERM

1 to 5 Years

### POSSESSION

August 2022

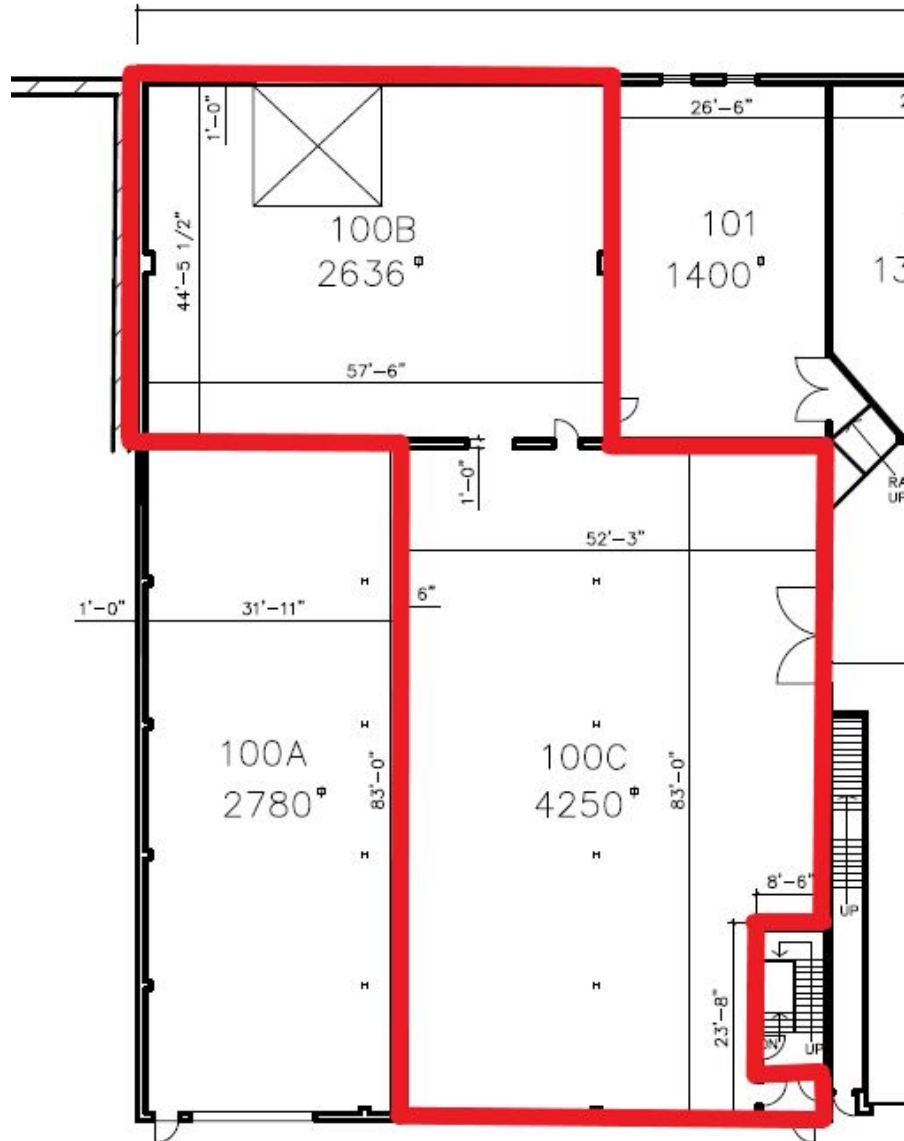
## FEATURES

---

- Ideal for manufacturing or creative studio
- 18 feet ceiling
- Large drive-in door
- Zoning is E 2.0 (x262)



# FLOORPLAN





**METROPOLITAN  
COMMERCIAL**

**TIM NOVAK**

Senior Vice President

Sales Representative

416 703 6621 x 246

[tim.novak@metcomrealty.com](mailto:tim.novak@metcomrealty.com)

150 BEVERLEY STREET, UNIT 1

TORONTO, ON | M5T 1Y5

416.703.6621

[WWW.METCOMREALTY.COM](http://WWW.METCOMREALTY.COM)

The information contained herein has been gathered from sources deemed reliable. However, Metropolitan Commercial Realty Inc., Brokerage, its agents, or employees make no representations or warranties on the accuracy of said information. Prospective tenants and their agents are advised to independently verify any information provided herein. Metropolitan Commercial Realty Inc., Brokerage