

RETAIL SPACE FOR LEASE 1165 BLOOR STREET WEST

TORONTO | ON



METROPOLITAN
COMMERCIAL



DETAILS

LOCATION

On Bloor Street West, West of Dufferin Street. [Click here for map](#)

BUILDING DETAILS

Main Floor - 1,620 SF
Lower Level - 988 SF

RENTAL RATE

\$32.00 PSF/YR Net + \$11.00 PSF/YR TMI + Utilities

TERM

3 to 10 Years

POSSESSION

Immediate

FEATURES

- Prime retail opportunity located in the popular, high pedestrian traffic area of Bloordale Village
- Close proximity to two major subway stations
- Exceptionally well-maintained, recently renovated building
- Three washrooms, useable basement (with secured storage room)
- Opportunity for street level signage
- A variety of uses considered. Café, Retail, Office uses are ideal



ADDITIONAL FEATURES

- Security Cameras
- Hi-speed fibre internet capability
- Fully upgraded electrical and plumbing
- Central A/C unit. Radiators + Radiant Floor heating
- Lower-Level
 - Kitchenette
 - Washrooms
 - Lockable Storage Room

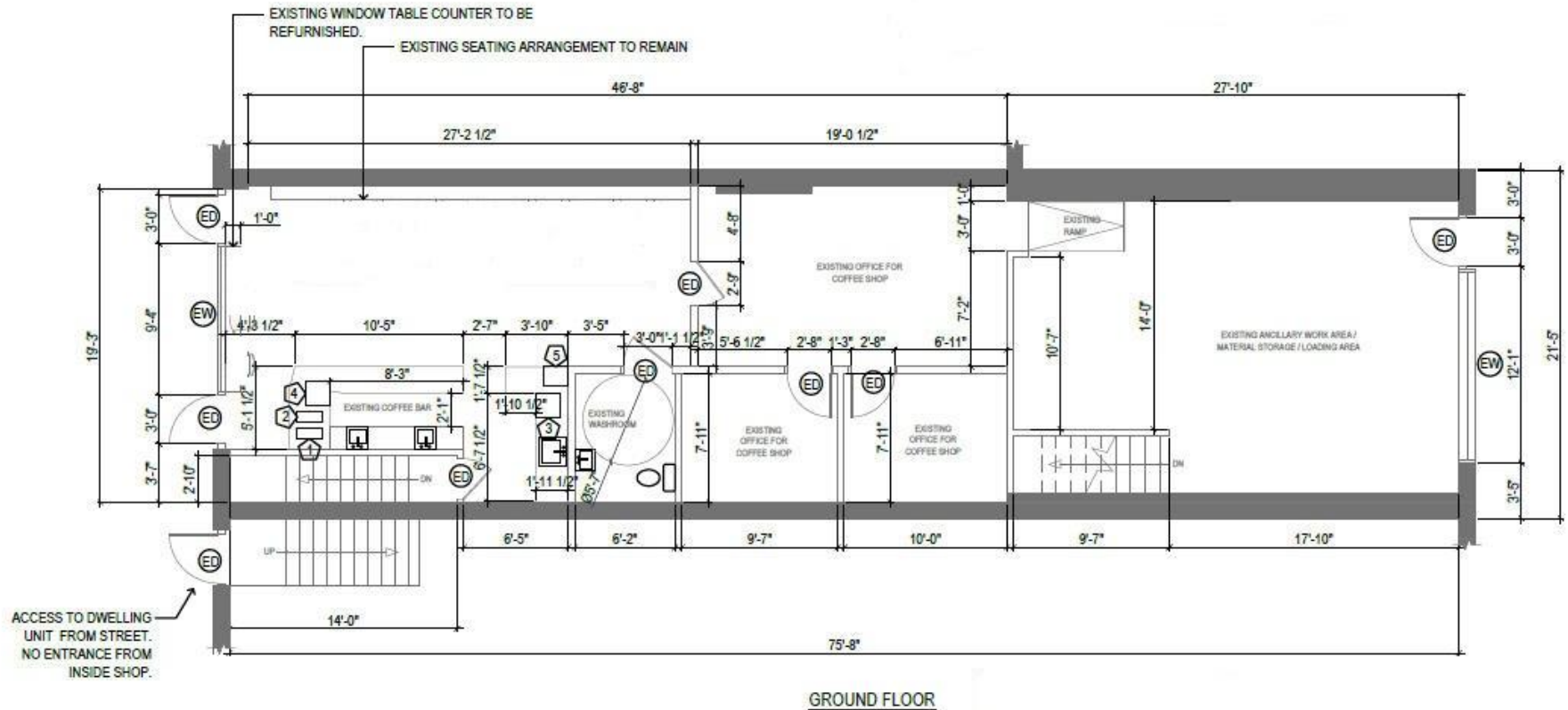


METROPOLITAN COMMERCIAL REALTY



1165 BLOOR STREET WEST

FLOOR PLAN - MAIN FLOOR



[illegible]



**METROPOLITAN
COMMERCIAL**

PAUL KOTYK

Senior Associate,
Broker

416.703.6621 x 245

paul.kotyk@metcomrealty.com

150 BEVERLEY STREET, UNIT 1

TORONTO, ON | M5T 1Y5

416.703.6621

WWW.METCOMREALTY.COM

The information contained herein has been gathered from sources deemed reliable. However, Metropolitan Commercial Realty Inc., Brokerage, its agents, or employees make no representations or warranties on the accuracy of said information. Prospective tenants and their agents are advised to independently verify any information provided herein. Metropolitan Commercial Realty Inc., Brokerage