



METROPOLITAN
COMMERCIAL

FOR LEASE 629 Adelaide Street W FLEX SPACE



Offering Summary

629 Adelaide Street West is ideally situated in The Heart Of King West. This rare industrial 16,000 SF space split between the Ground and Second floors, with **12 foot high ceilings** has a wide range of potential uses such as:

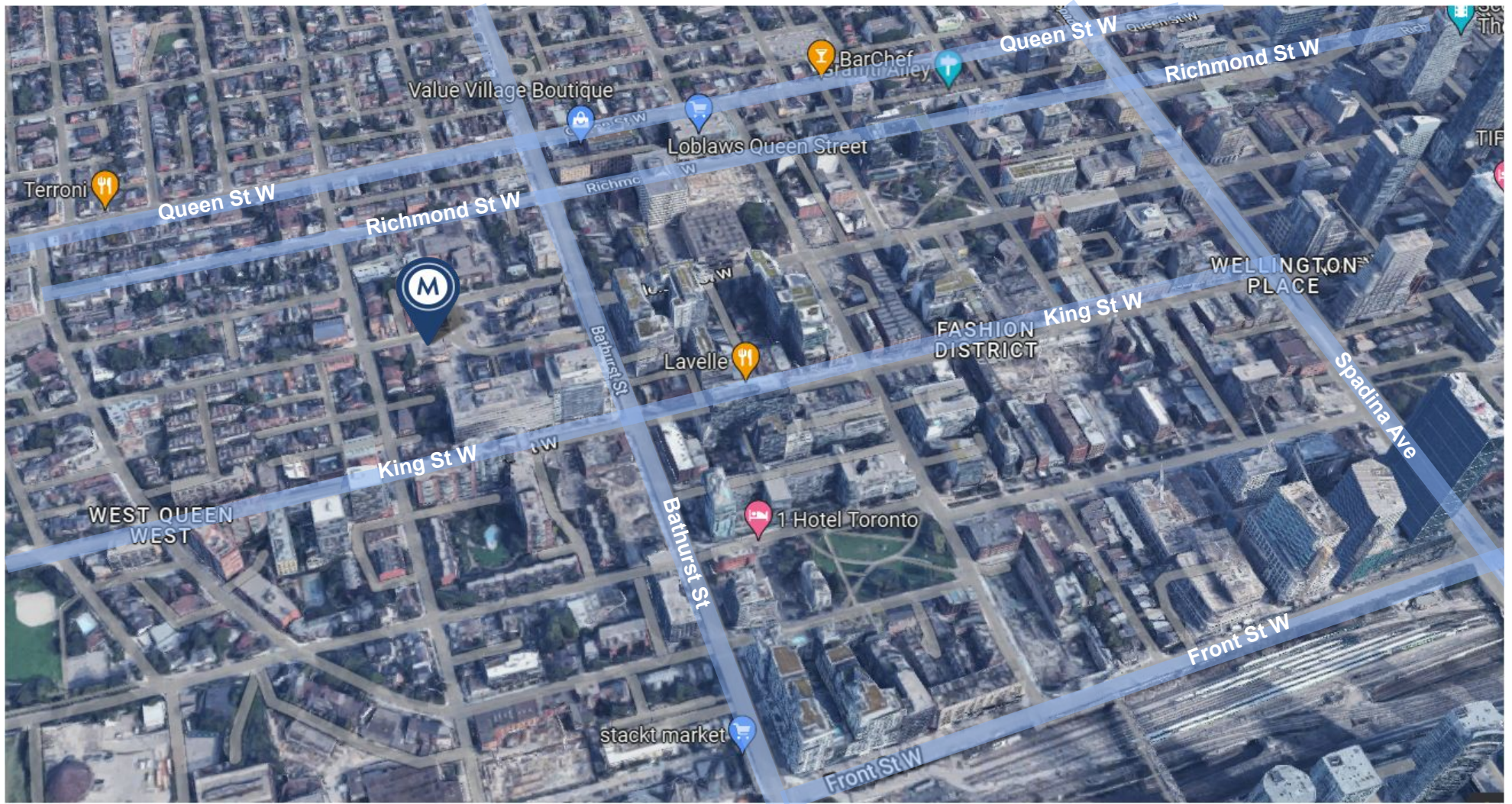
- Warehousing
- Office
- Courier Service
- Artist/Photographer/Designer Studio
- Performing Arts Studio
- Wholesale Establishment
- Carpenter Shop
- Light Manufacturing

Includes **two truck level height shipping doors**.

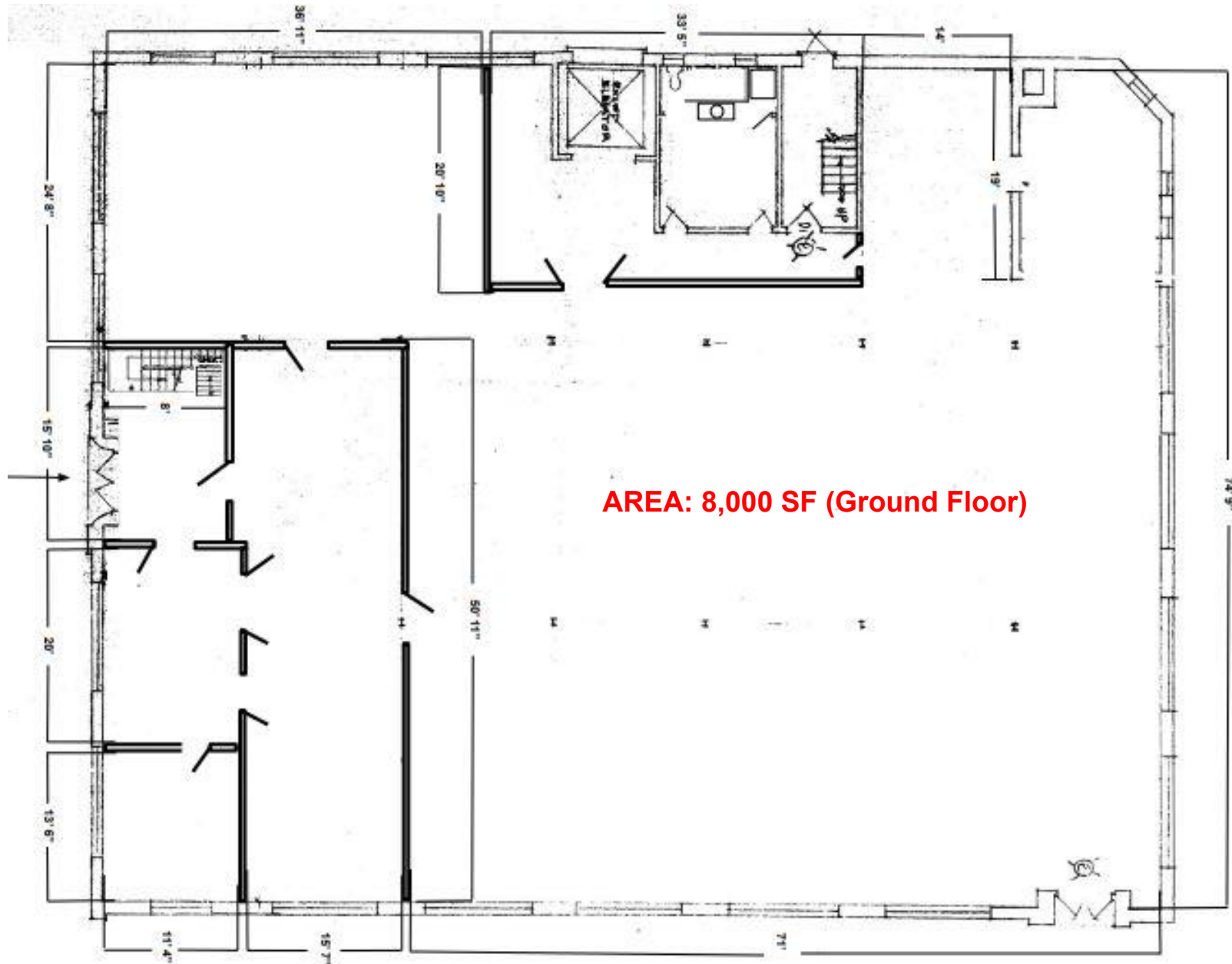
Property Details

Unit Size	16,000 SF (Total)
Net Rent	\$29.00 PSF/YR
TMI	\$10.00 PSF/YR plus Utilities
Zoning	Former City of Toronto By-Law No. 438-86 (I1 D3)
Available	TBA

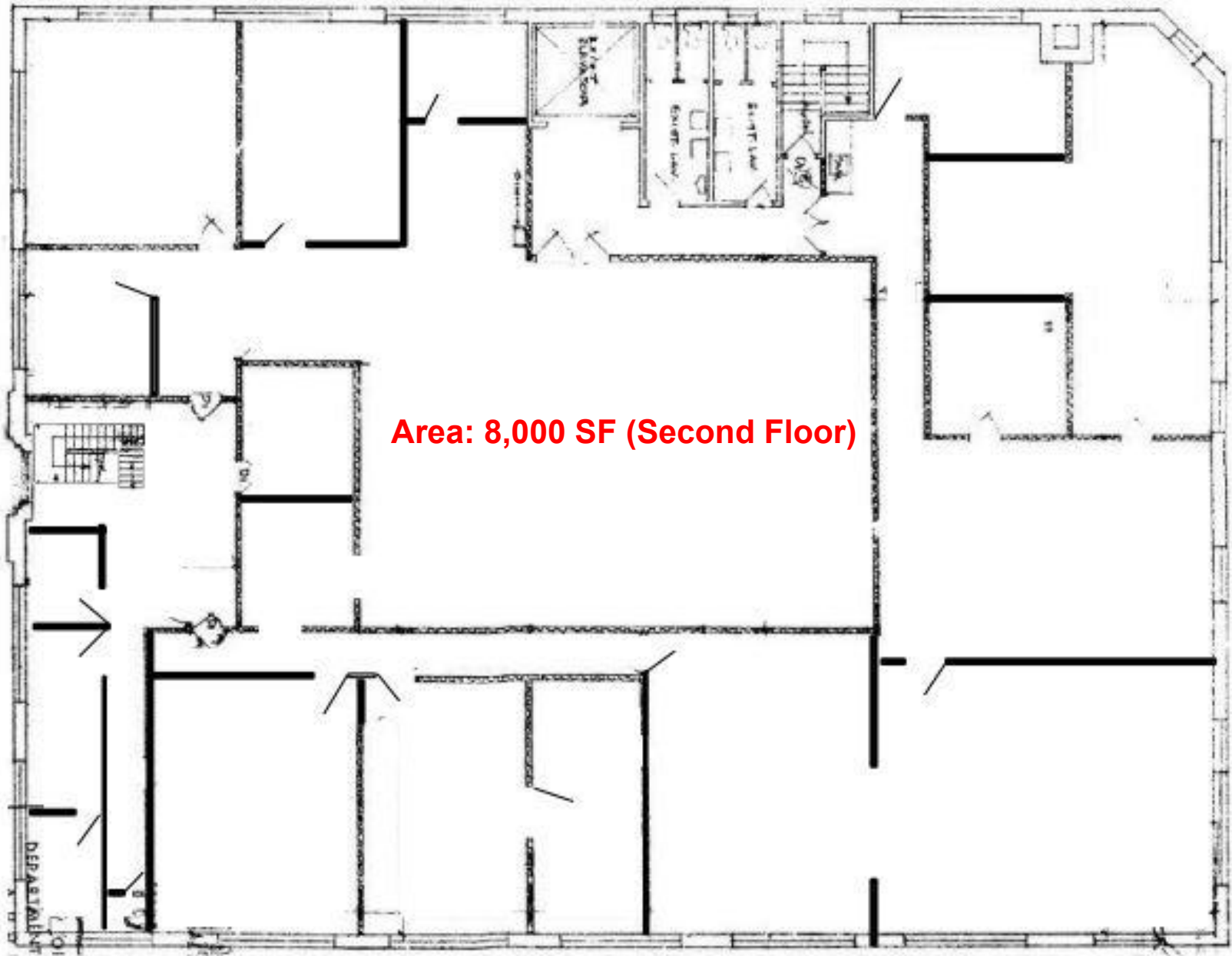
Area Map

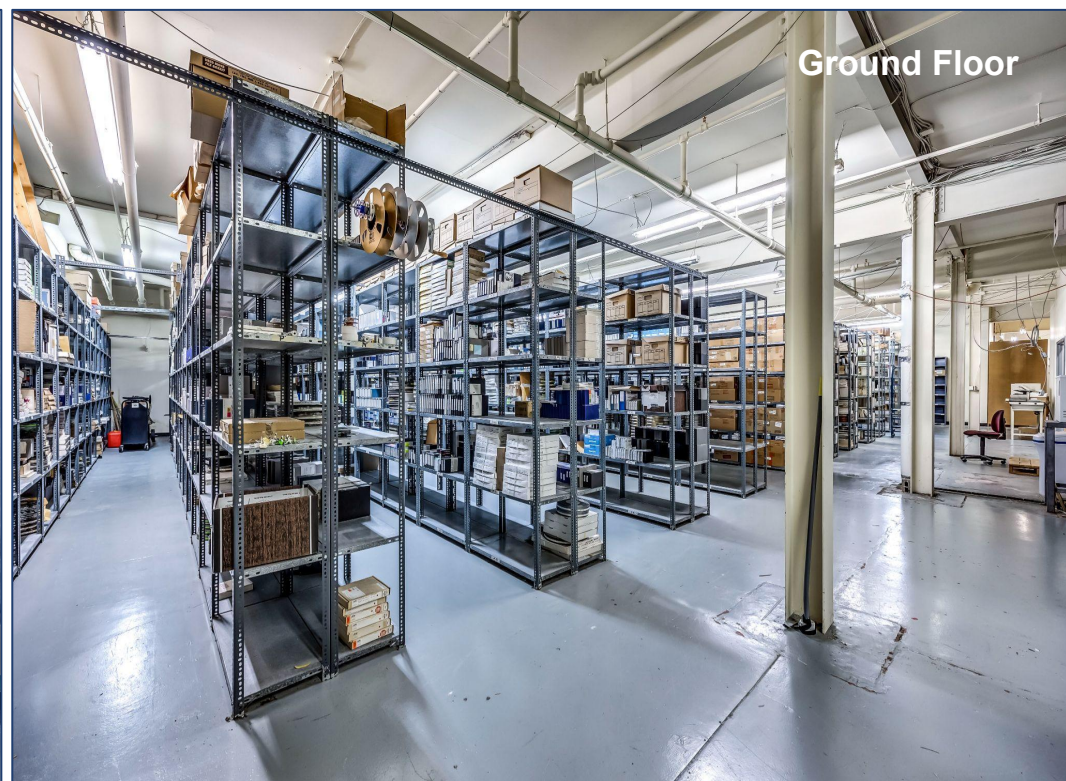
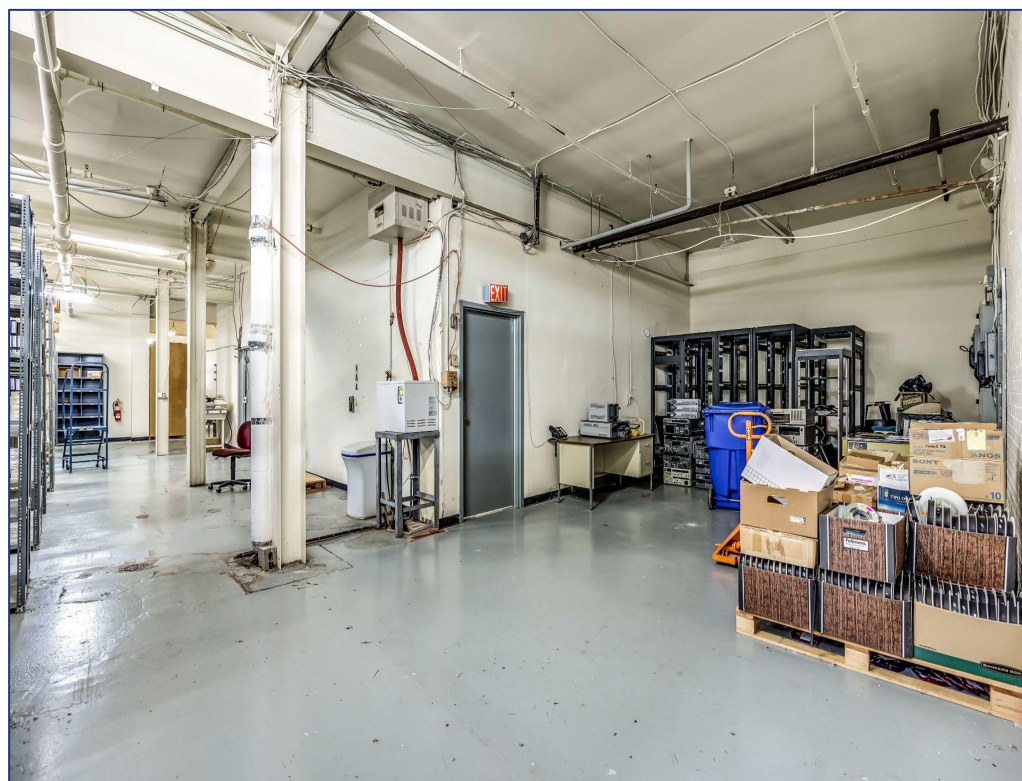


Floor Plans



Floor Plans

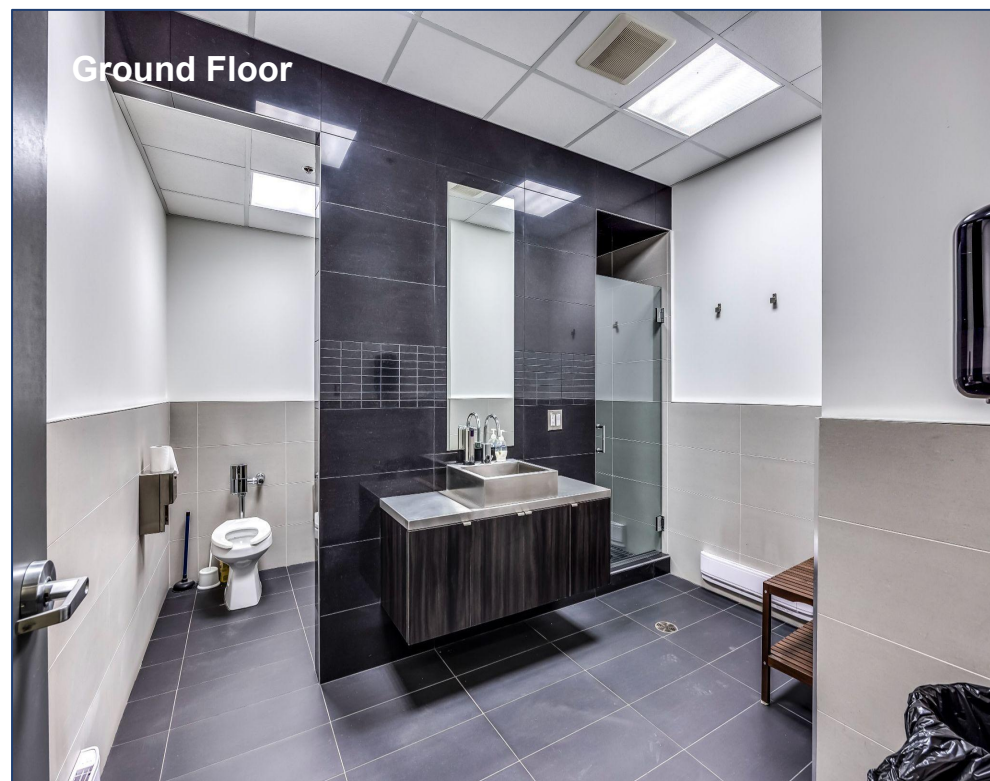




Ground Floor



Ground Floor



6

METROPOLITAN COMMERCIAL REALTY



629 ADELAIDE STREET WEST



METROPOLITAN
COMMERCIAL

Ming Zee

President, Broker of Record
416.703.6621 x 222
ming.zee@metcomrealty.com

David De Courcy

Partner, Broker
416.703.6621 x 226
david.decourcy@metcomrealty.com

Nick Nankisoor

Sales Representative
416.703.6621 x 241
nick@metcomrealty.com

Metropolitan Commercial Realty Inc.

150 Beverley Street, Unit 1
Toronto, ON M5T 1Y5

metcomrealty.com

Disclaimer: The information contained herein has been provided to Metropolitan Commercial Realty Inc. from sources deemed reliable and correct, however we do not warrant its accuracy or assume any responsibility or liability of any kind whatsoever with respect to the accuracy of the information contained herein. All persons are advised to independently verify the information. The information herein is subject to errors, omissions, change of price, rental or other conditions, prior sale or withdrawal at any time without notice. Metropolitan Commercial Realty Inc., Brokerage. *Sales Representative