



31 POWERHOUSE STREET

Suite **203** | Office Space For Lease

PROPERTY DETAILS

LOCATION

On Powerhouse St, off Foundry Ave and Davenport Rd. [CLICK HERE](#)

BUILDING DETAILS

Suite 203 - 1,905 SF (Divisible to 950 SF)

RENTAL RATE

\$45.00 Semi-Gross

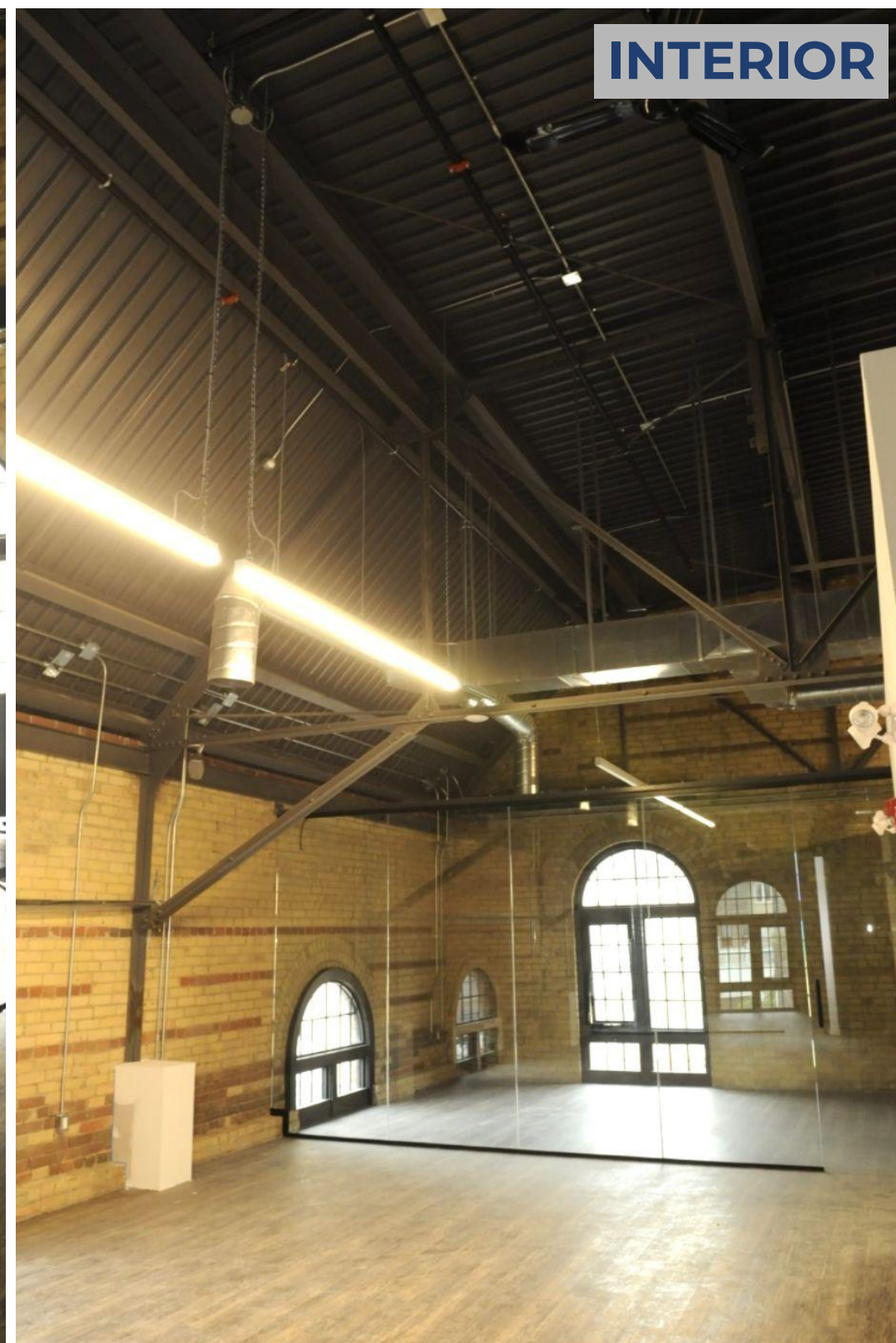
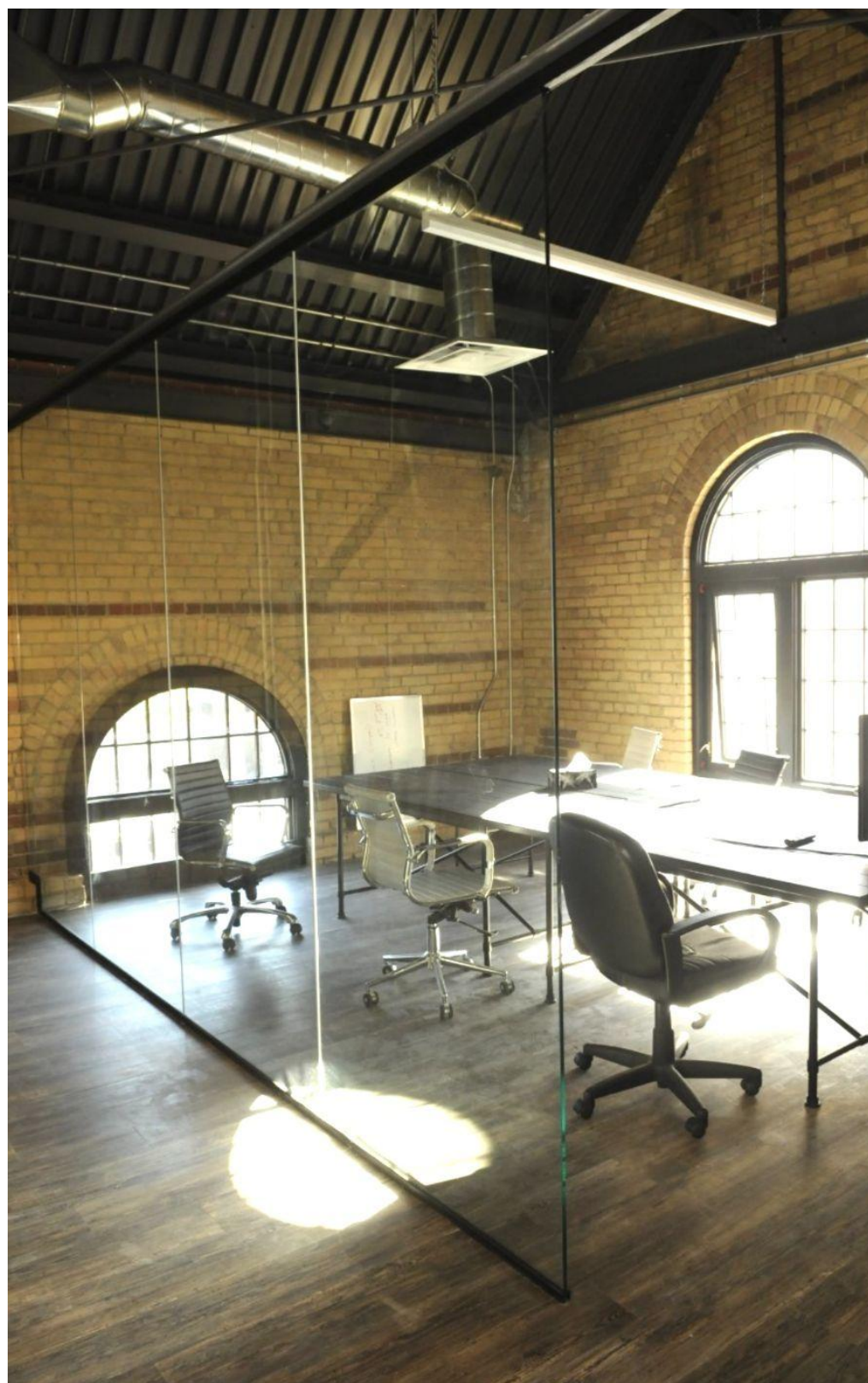
TERM

2 to 5 Years

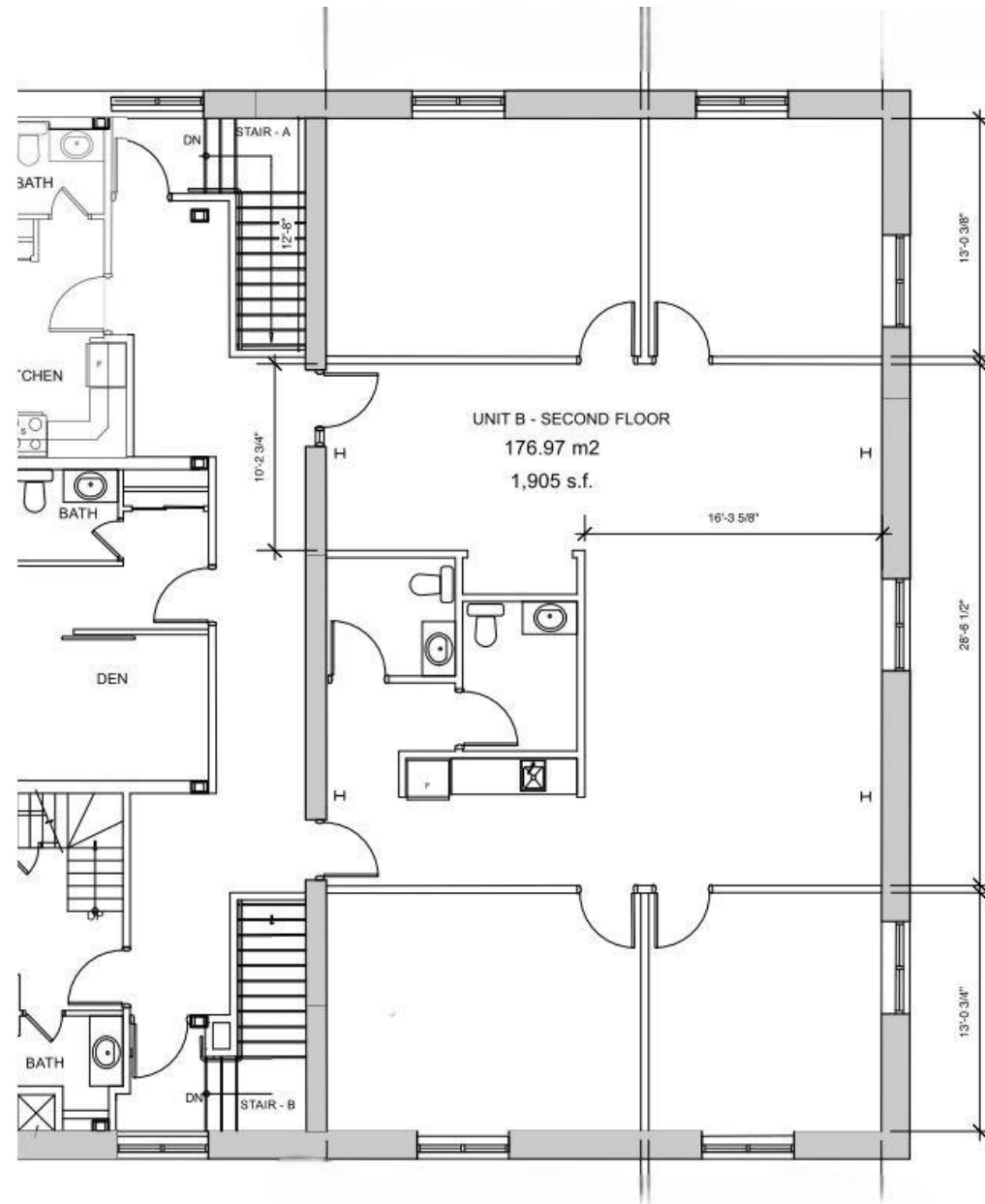
FEATURES

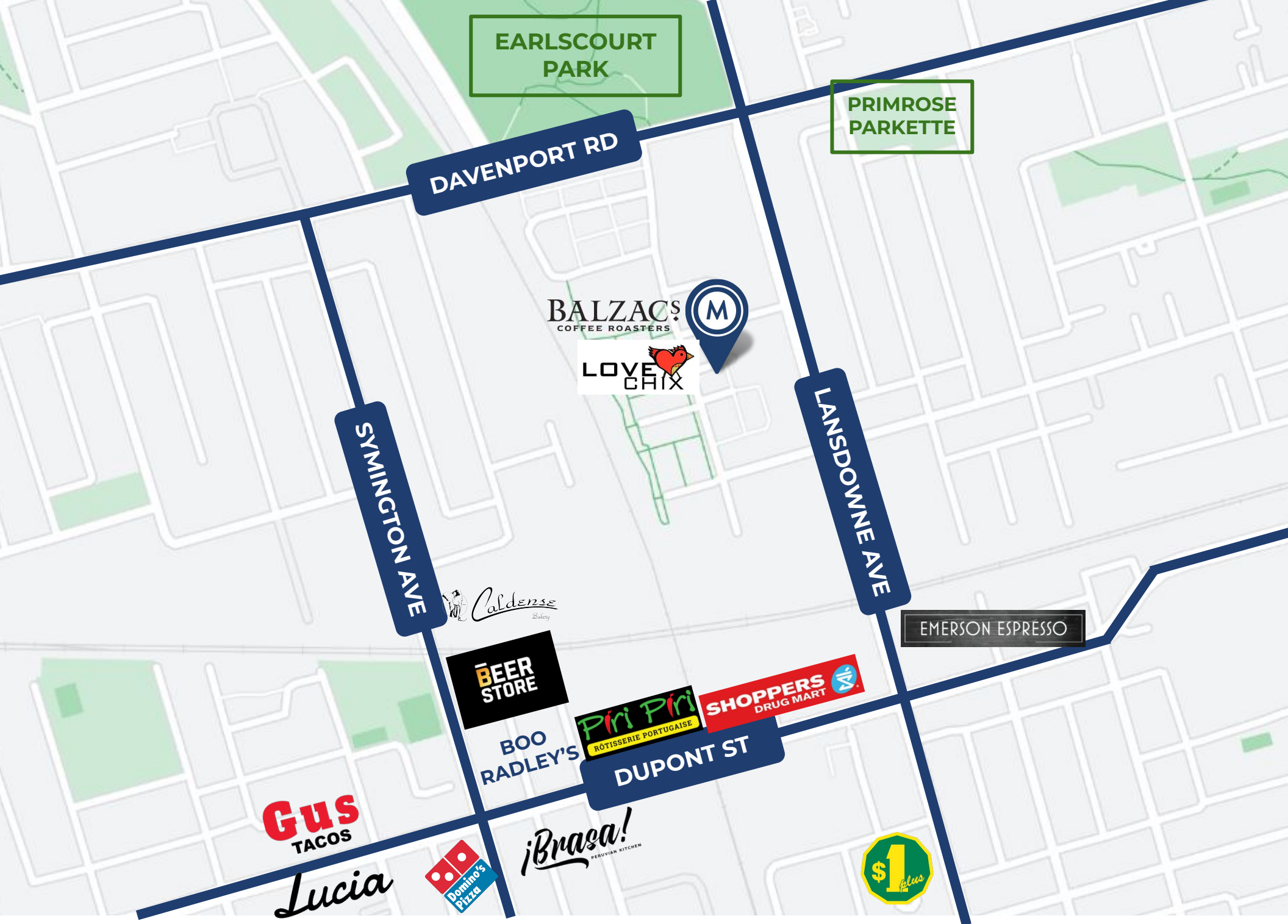
Located in a vibrant new urban node with plenty of amenities, on a park setting with green space, car and bicycle parking. Recently renovated historic brick and beam building with true loft ceilings and hardwood floors, with new HVAC and mechanicals. Including:

- Studio loft with 15 ft ceilings
- 3 offices and board room on glass
- 2 washrooms and kitchen
- Underground parking space available
- Main floor restaurant and cafe(Balzacs)



FLOOR PLAN





EARLSCOURT
PARK

PRIMROSE
PARKETTE

DAVENPORT RD

BALZAC'S
COFFEE ROASTERS



LOVE
CHIX

SYMINGTON AVE

LANDSOWNE AVE

EMERSON ESPRESSO

Caldense
Bakery

BEER
STORE

BOO
RADLEY'S

Piri Piri
RÔTISSERIE PORTUGAISE

SHOPPERS
DRUG MART

DUPONT ST

Gus
TACOS

Lucia

Domino's
Pizza

iBrasa!
PERUVIAN KITCHEN





METROPOLITAN
COMMERCIAL

31 POWERHOUSE STREET

Suite 203 | Office Space For Lease

TIM NOVAK

Senior Vice President,
Sales Representative

M. 416.889.7100

W. 416.703.6621 ext. 246

tim.novak@metcomrealty.com

150 BEVERLEY STREET, UNIT 1

TORONTO, ON | M5T 1Y5

416.703.6621

WWW.METCOMREALTY.COM

The information contained herein has been gathered from sources deemed reliable. However, Metropolitan Commercial Realty Inc., Brokerage, its agents, or employees make no representations or warranties on the accuracy of said information. Prospective tenants and their agents are advised to independently verify any information provided herein.

Metropolitan Commercial Realty Inc., Brokerage