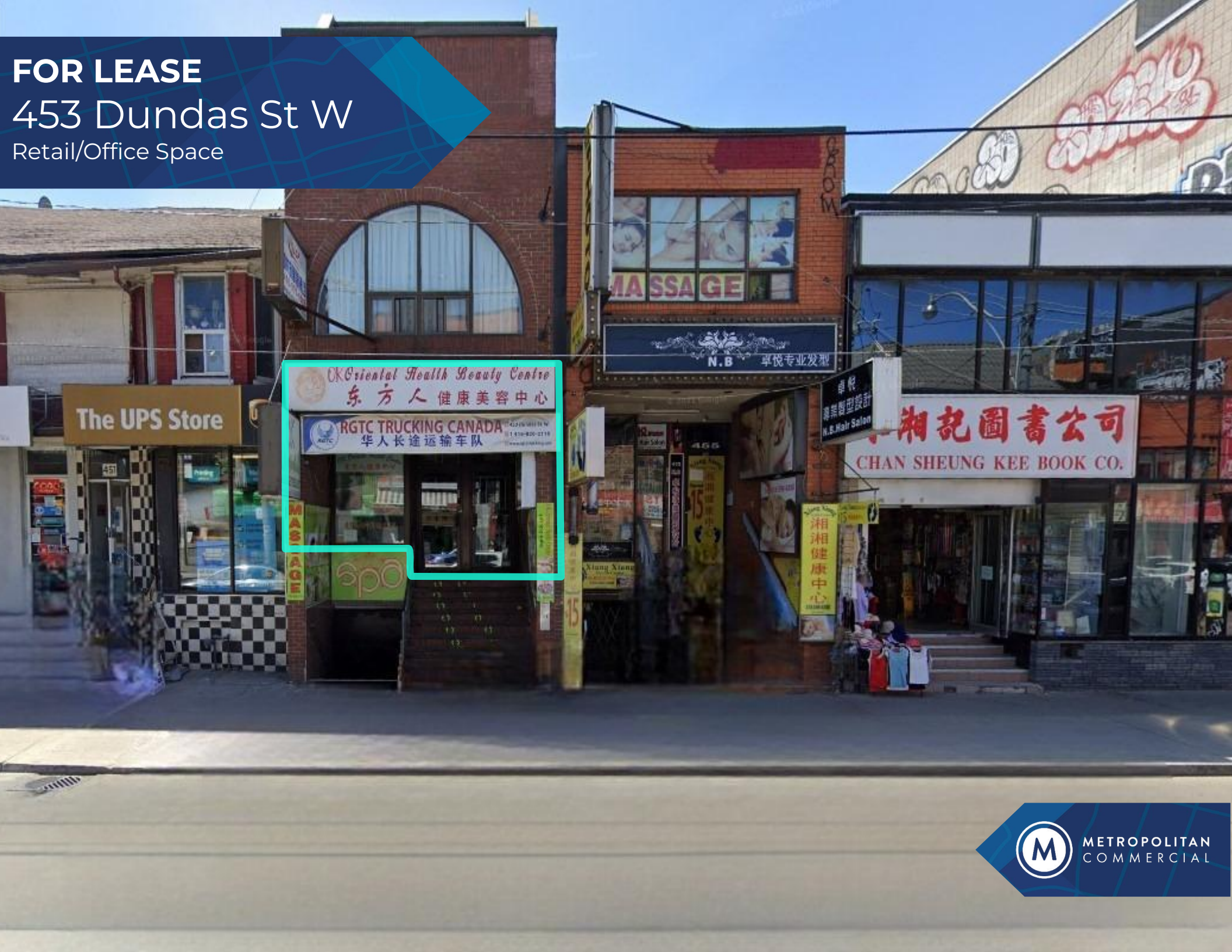


FOR LEASE
453 Dundas St W
Retail/Office Space



PROPERTY DETAILS

| | |
|---------------|--|
| LOCATION | Located on the south side of Dundas St W, just east of Spadina Ave. CLICK HERE |
| BUILDING AREA | 1st Floor - 1,200 SF |
| RENTAL RATE | \$40.00 PSF/YR Net |
| T.M.I. | \$20.00 PSF/YR |
| FRONTAGE | 15 FT |
| POSSESSION | Immediate |

PROPERTY SUMMARY

This main level retail space is situated on bustling Dundas St W. It boasts a bright, large open space with high ceilings and a large window at the front. With its high visibility and excellent exposure in a high traffic area, it's an ideal location for various businesses. Positioned within a vibrant commercial hub, it suits retail, office, food, and gallery purposes. In the heart of Chinatown, it's steps away from Spadina Avenue, Rexall, AGO, OCAD, and University Ave. Convenient transportation options include a TTC streetcar stop at the door and walking distance to St. Patrick Station.



CONNECTIVITY



BIKE SCORE OF 98

→ Daily errands can be accomplished on a bike



TRANSIT SCORE OF 100

→ Convenient streetcar at door



WALK SCORE OF 100

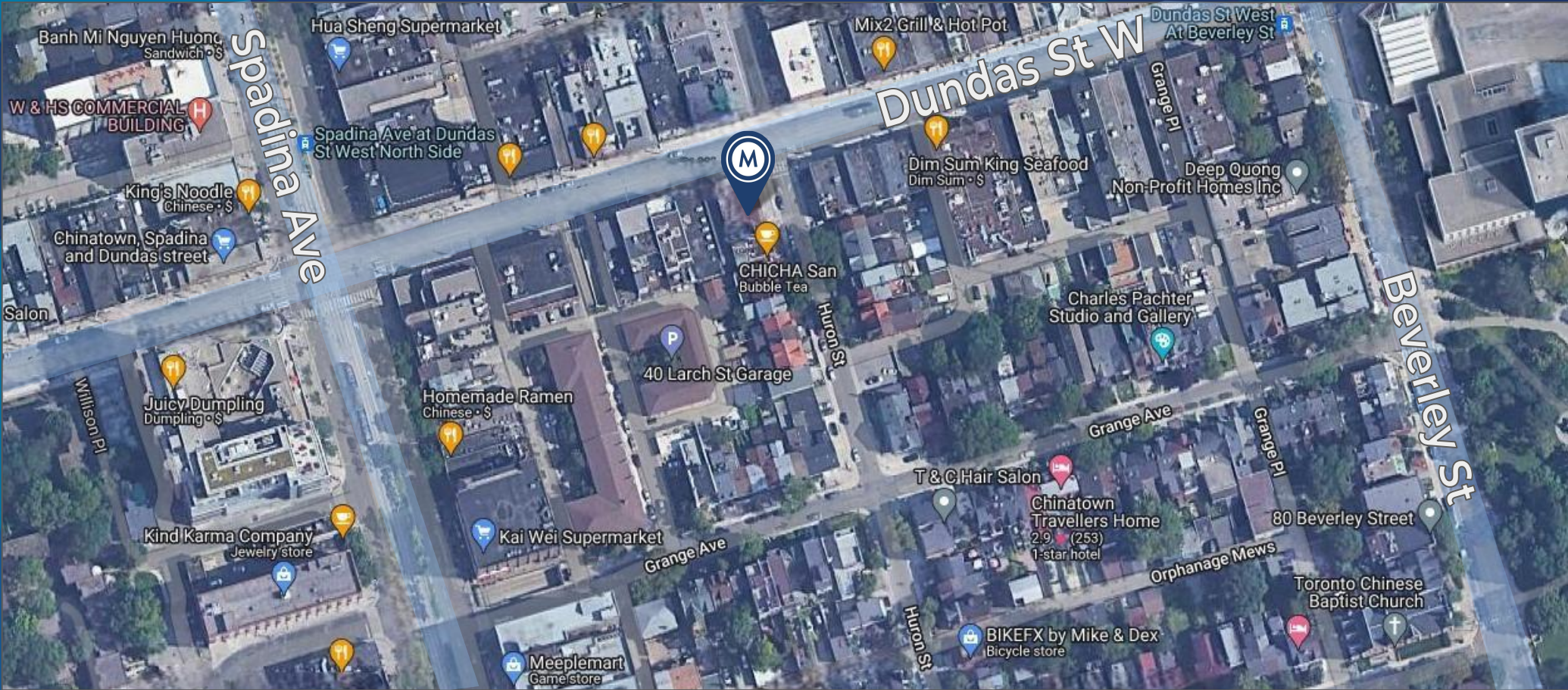
→ Daily errands do not require a car



METROPOLITAN
COMMERCIAL



AREA MAP





**METROPOLITAN
COMMERCIAL**

CONTACT

CLAIRE BLICKER

Vice President

416.703.6621 x232

claire.blicker@metcomrealty.com

150 Beverley St | Suite 1 Toronto, ON | M5T 1Y5

416.703.6621

www.metcomrealty.com

The information contained herein has been gathered from sources deemed reliable. However, Metropolitan Commercial Realty Inc., Brokerage, its agents, or employees make no representations or warranties on the accuracy of said information. Prospective tenants and their agents are advised to independently verify any information provided herein. Metropolitan Commercial Realty Inc., Brokerage