

FOR LEASE | FLEX SPACE

1397A YONGE STREET 2nd Floor

TORONTO, ON



METROPOLITAN
COMMERCIAL



DETAILS

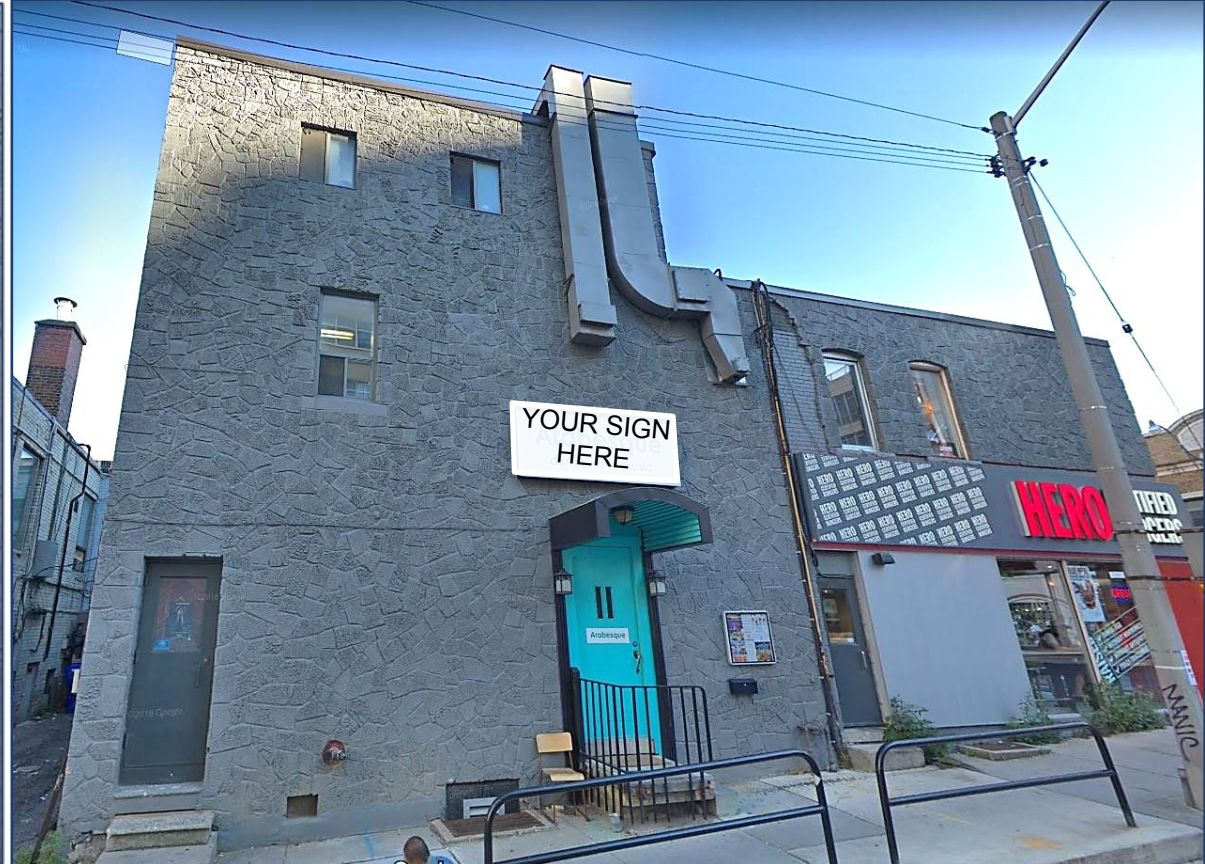
Location	Yonge St and St. Clair. Click Here For Map.
Building Details	2nd Floor (Separate Entrance) – 1,000 SF
Gross Rental Rate (Monthly)	\$3,300 Plus Utilities
Term	3 to 5 Years
Possession	30 Days Notice

FEATURES

- Flex Space - Bright, Functional and Open Space for a Variety of Studio/Office Uses
- Perfect Fit for a Yoga, Dance or Fitness Studio – Ideal for Office Use As Well.
- Convenient Men And Women Washrooms
- Directly Across From St. Clair Subway Station
- Next to Many Notable Retail and Office Businesses
- Within the Up-Scale Neighbourhood of St. Clair and Yonge
- Signage Available







CONTACT:

TIM NOVAK*

Senior Vice President

416.703.6621 ext. 246

tim.novak@metcomrealty.com



METROPOLITAN
COMMERCIAL

150 BEVERLEY STREET, UNIT 1

TORONTO, ON | M5T 1Y5

416.703.6621

WWW.METCOMREALTY.COM

The information contained herein has been gathered from sources deemed reliable. However, Metropolitan Commercial Realty Inc., Brokerage, its agents, or employees make no representations or warranties on the accuracy of said information. Prospective tenants and their agents are advised to independently verify any information provided herein.

Metropolitan Commercial Realty Inc., Brokerage. Real Estate Salesperson*